



BUMPER HITCH



Ranch Hand *By*

A New Bumper Hitch Model from Wilson Trailer

With available lengths of 14', 16' and 18', the Ranch Hand BH is perfect for hauling only a few livestock. It has all the same features as the popular Ranch Hand gooseneck model but in a convenient bumper hitch style trailer.

FEATURES

Shown here are additional standard features specific to the Ranch Hand Bumper Hitch model.

You will feel confident knowing Wilson's superior quality, durability and lowest cost of ownership has been built-in to the structure of the trailer and not added on.



One-piece formed V-nose - no seams



All aluminum sub frame with 6" cross bar spacing. The best floor strength in the industry.



Full-width 84" interior.



The beefy aluminum A-frame coupler provides strength to the trailer where it is important.



Large side door with full-length running boards.

THE LIVESTOCK BRAND™

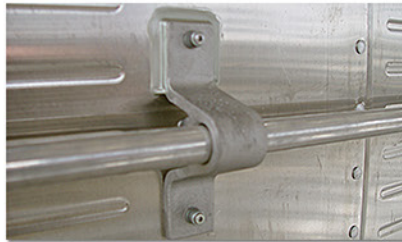


POPULAR OPTIONS

Here are some of the more popular options available for the Ranch Hand BH. Call your Authorized Wilson Sales Representative today to spec out your trailer.



.110 Thick Flat Tread Plate with Crossbars on 6" Centers



Tie Rail



Bump Rail



Inside Tie Loops



Style O – Roller Gate with Multiple Settings



Outside Tie Loops



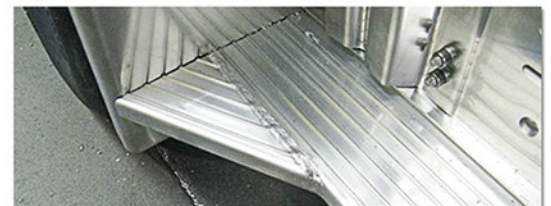
Alcoa Aluminum Wheels



Load Lights



Extra Interior Lights



Running Board Fender Deflector

Specifications

Gross Vehicle Weight Rating – 9,950 lb. GVWR

Length – 14 ft., 16ft., and 18 ft

Width – 7 ft. inside

Height – 6'8" inside

Coupler – 2-5/16" diameter ball-type with hammer blow, A-Frame coupler

Front End – (V) Front

Sides – Formed offset sheet and post sections of aluminum with two sizes of punched and double-embossed oval openings. Formed posts on 21" centers.

Choice of side patterns C, D, J, or N

Roof – One-piece, stretched aluminum.

Rear End – Choice of Styles A, B or E.

Floor – .110" thick aluminum tread-plate with 4 longitudinal corrugations. Crossbars on 6" centers.

Landing Gear – 2,000 Bull Dog Topwind A-Frame bolt-on swivel bracket

Brakes – Four-wheel; electric; 12" x 2" brake pads.

Brake Break-away Kit – Accidental disconnect safety feature.

Axles – Two 5,200 lb. rubber torsion; E-Z Lube hubs.

Wheels – Must be added to the order

Tires – Must be added to the order

Spare Tire Carrier – Curb side, front

Side Door – (1) with lockrod latch, located on driver's side, with 33" opening

Lights – Meets or exceeds I.C.C. standards.

Interior Lights – (1) Interior light on 14–18 ft. models

Crowd Gates – Style A (std.) with outside-release latch; punched pan.

Header – Extruded aluminum.

Rub Rail – Extruded aluminum with running boards full length of trailer.

Mud Flap – Rubber mud flap behind rear wheels.

Finish – Steel treated with black corrosion resistant coating; all aluminum left natural.

NOTICE: All visual representations, dimensions, and specifications contained in this literature are based on the latest product information available at time of publication approval. The right is reserved to make changes in materials, equipment, design, specifications, and models; and to discontinue models.

The WTC, Ranch Hand BH logo and the phrases "The Livestock Brand" and "Since 1890... A Good Name to Have Behind You!" are trademarks and registered trademarks of Wilson Trailer Company.



4400 S. Lewis Blvd. ■ Sioux City, IA 51106

800-798-2002 ■ Fax: 712-252-6510

www.wilsontrailer.com ■ sales@wilsontrailer.com

Contact Your Authorized Wilson Dealer

Since 1890... A Good Name to Have Behind You!™

© 2017 Wilson Trailer Company All Rights Reserved Printed in the U.S.A. WTPS 5/17 1M