



GRAIN/COMMODITY TRAILERS

PACESETTER™ | COMMANDER™



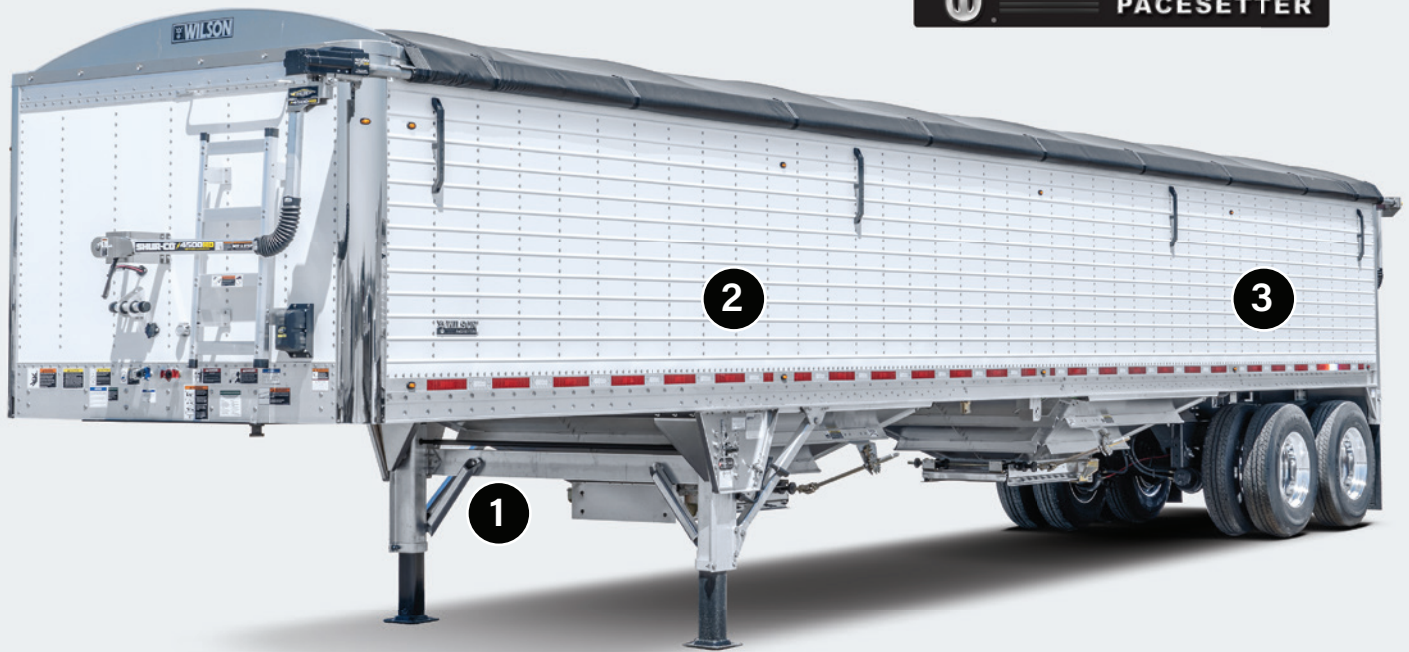
AMERICAN  QUALITY
BUILT IN THE U.S.A SINCE 1890

SINCE 1890
A GOOD NAME TO HAVE BEHIND YOU.™





STANDARD FEATURES



The Wilson® Pacesetter™ is the preferred grain trailer in North America. This strong, durable and highly configurable trailer is engineered to withstand the forces of the field as well as the road. You'll feel confident in achieving your best payload with the Wilson® Pacesetter™.

1. Aluminum Landing Gear and Braces

Bracing the landing gear legs to the "C" channel cross support instead of the hopper slopes increases strength. Jost Alumilight comes standard on all Wilson grain trailers.



2. Larger Diameter Rivets

The sides are fastened using larger diameter rivets with 50% larger heads to produce greater shear strength. Combine this with the uniqueness of Wilson's Full-Length inside skin, and a state-of-the-art maximum side strength design is created.



3. Full-Length Skin on the Inside Walls

Full-length skin on the inside walls reduces build-up and provides structural integrity to your trailer. The full-length inside skins are standard on all grain trailers.



Front



Rear



Not all equipment shown is considered standard.

The Wilson® Commander™ is the first double-wall aluminum grain trailer with a sloped front and rear. Experience the reliability of a proven and tested design, rather than the trials of others attempting to duplicate it. It is available in all lengths, both widths and all suspension configurations.

4. Roof Bows

Our standard bow is removable, easily replaced if damaged and is securely fastened to the header so it remains an integral component of the trailer serving as extra support.



Optional indented bows are available to accommodate a ridge pole tarp set up.

5. Hopper Stiffeners

Wilson's two-piece lower hopper is standard with two stiffeners per side, plus corner bracing for a stronger hopper, less prone to bulge and sag. The stiffeners also serve as handy knock rails for sticky product.



6. Side Vent Ports

Vent ports are positioned between each set of side posts, allowing the sides to breathe, extend the life of the side wall, and also serve as a useful inspection source.





STANDARD FEATURES

Steel Subframe

Wilson's larger tandem tubes, identical in size, provide more strength in the suspension area. The tubes are undercoated inside and vented to inhibit corrosion. All metal parts are coated with an anti-corrosive metal treatment. For additional protection between dissimilar metals, Wilson® adds a polymer material barrier to the connection areas of the assembly.

Deeper Front and Rear Channels

Wilson's deeper front/rear channels add strength to the trailer's design.

Long-Lasting Led Lights

Long-lasting LED lights are standard for all applications of the tail, turn, and clearance trailer lights.

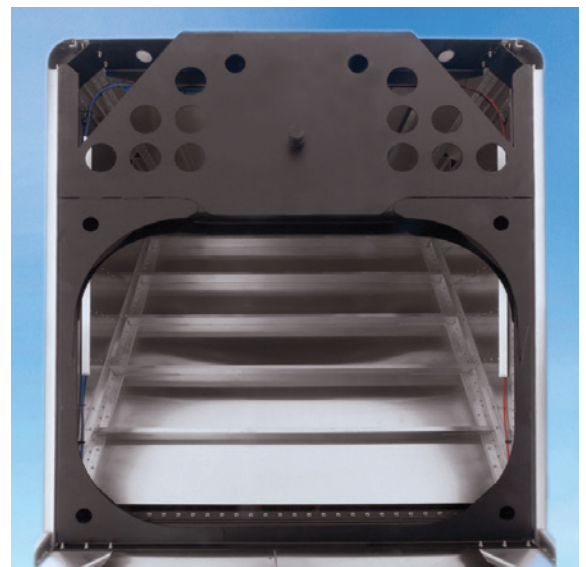
Sealed wiring System

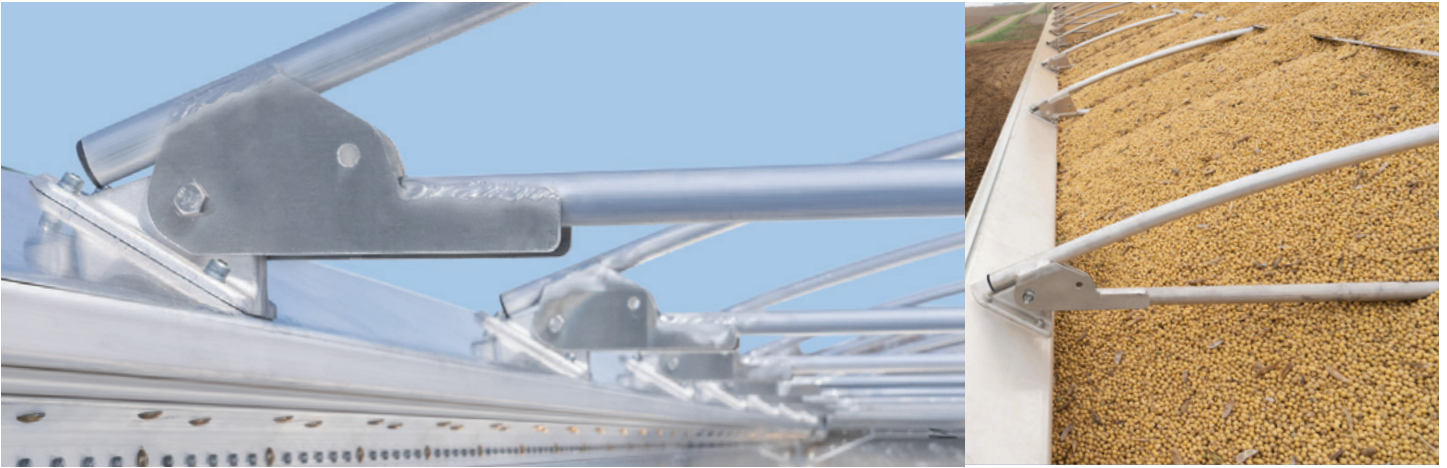
Designed with low maintenance in mind, Wilson uses a dependable sealed wiring system backed by the industry's best warranty. No excess or exposed wiring – it's sealed and protected!

Open King Pin Design

Wilson's open king pin area is designed to transfer the weight of the trailer's load to the outside rails. The built-in strength of Wilson's design eliminates the cross bracing and an "X" brace which would otherwise collect debris, add weight, and lead to corrosion.

Cleaning and maintenance are easily performed with Wilson's unobstructed access to the nose area, plus there is more clearance for truck frames when maneuvering over raised areas or in and out of a field. All metal king pin components are coated with an anti-corrosive metal treatment, plus a polymer material barrier between dissimilar metals.





Tapered Header

The 700 model features a 30° tapered header that deflects product inside the trailer and keeps the header clean under the tarp.



One-Piece Side Skin



Spliced Side Skin

One-Piece or Spliced Outside Skin

Choose between either a one-piece side skin or spliced side skin. Our one-piece side skin is available in white, 67 inch height only. Our spliced side skin is available on all side-height configurations.



Mud flaps Attached Flush

Mud flaps now attach to the back side of our redesigned bumper bar. This eliminates the bolt strap and allows more space between the rear tire and mud flap for additional clearance, without the use of a z-bracket.



Trap Options



Rollers Require **No Greasing.**

Roller Strap Trap™

(Standard on All Wilson Grain Trailers)

Since its introduction in 1996, the Roller Strap Trap™ remains the industry's easiest opening, lowest maintenance manual trap. The clean and easy-to-maintain design is reliable, light weight and comes standard on all Wilson grain trailers.

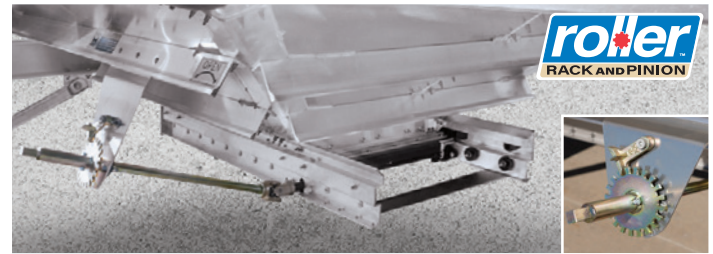
- Reduced Weight Compared to Other Traps
- No Door Roller Bearings to Seize and Replace
- Non-Corrosive Components
- Added Clearance and Less Interference



Stainless Steel
Laser Cut Rack

Roller Rack & Pinion™ Trap (2-Speed Gear Drive)

RRP traps with 2-speed gear boxes are used for larger sized doors, metering fertilizer and seed, and hauling sand and aggregate. (All RRP doors come standard with stainless steel laser cut rack.)



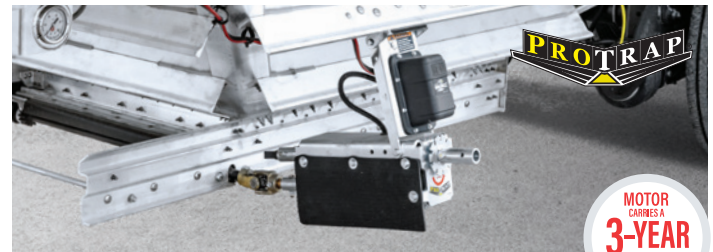
Roller Rack & Pinion™ Trap (Direct Drive)

RRP traps with direct drive are used for smaller doors and ag commodities. (Shown with standard steel door. Optional aluminum and stainless steel doors are available.)



HydroTrap™

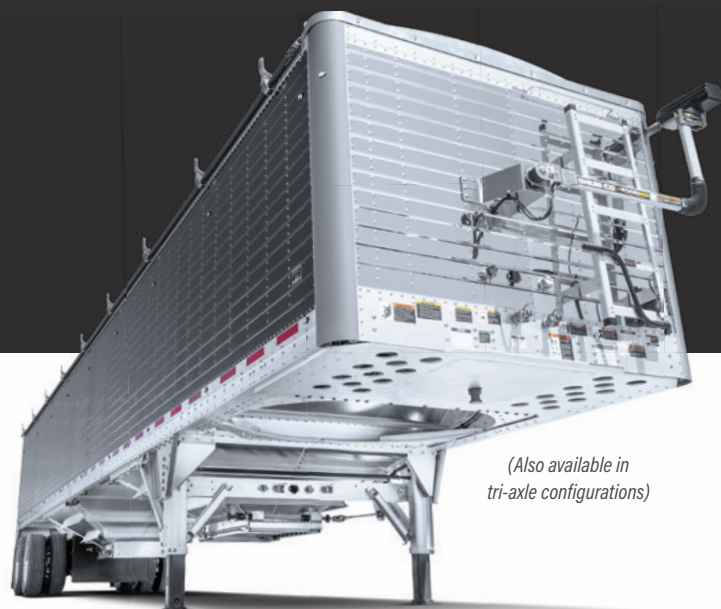
Get the most ground clearance with the hydraulic powered trap opener. The trap can be operated either by controls mounted along the side-rail or with the multi-functional remote.



ProTrap®

The hopper doors slide open while the operator stays away from the dust! All-metal gears and housing handle the hard stops.

MOTOR
CARRIES A
3-YEAR
NON-PRORATED
WARRANTY



(Also available in tri-axle configurations)

SUPERLITE™

LIGHT-WEIGHT ALUMINUM OPTIONS

Our **Superlite™** weight saving aluminum options will improve your fuel economy and provide maximum protection against corrosion. Superlite aluminum options will pay off, year-over-year.

POPULAR SUPERLITE™ OPTIONS



Aluminum King Pin

Wilson's Aluminum King Pin saves weight, maintains a clean, open design and evenly transfers the load weight to the outside rails. The open design eliminates the need for cross braces and an "X" brace.



C-Beam Style Aluminum Subframe

A light-weight replacement for the steel beam long member. The C-Beam Style aluminum subframe is ideal for lighter-weight hauls.



I-Beam Style Aluminum Subframe

The heavy-duty I-Beam Style aluminum subframe provides added strength for heavy loads and weight distribution.

WEIGHT SAVINGS
UP TO
1,200 lbs
TRAILER AS LIGHT AS
7,500 lbs
(Depending on configuration)

ALUMINUM OPTION	WEIGHT SAVINGS*
Aluminum King Pin	235 lb.
Aluminum Tandem Sub-Frame	390 lb.
(4) Aluminum Wheels/Wide-based Tires	400 lb.
Aluminum Drop Leg Landing Gear	110 lb.
Duralite™ Hubs and Centrafuse Drums	100 lb.

*Weights Savings are Approximate

Power Tarp



** Shur-Co® is an independent manufacturer of after-market products that can be installed on the Wilson Grain Trailer.*

Shur-Co's 4500 Series HD Electric Tarp

Featuring a powerful American-made motor with all-metal gearbox and an incredibly reliable magnetic break. The heavy-duty aluminum arms test strongest in the industry and are backed by a lifetime warranty.

The 4500 Series HD motor casing is standard in black, or a chrome cover is a great custom option to consider. The DiamondCore™ tarp is backed by a 24-month warranty – The best in the industry!



ShurLink PRO™ Remote

Operate Shur-Co's 4500 Series HD, MaxxTrap™, ProTrap® and LiteALL™ LED work lights from the comfort of your cab.



ShurLink EZR™ Remote

Engineered to be the simplest and best-performing SMARTrailer™ accessory that Shur-Co® has to offer.

Tri-axle Configurations



Dual-Dual-Single Non-Equalizing Rear Lift (with Dial-Down)

Shown: DWH-750 Pacesetter™ – 50' long, 96" wide, 73" sides
10'-7" Spread with 49" spacing between the front and center axle,
78" between the center and rear axle.

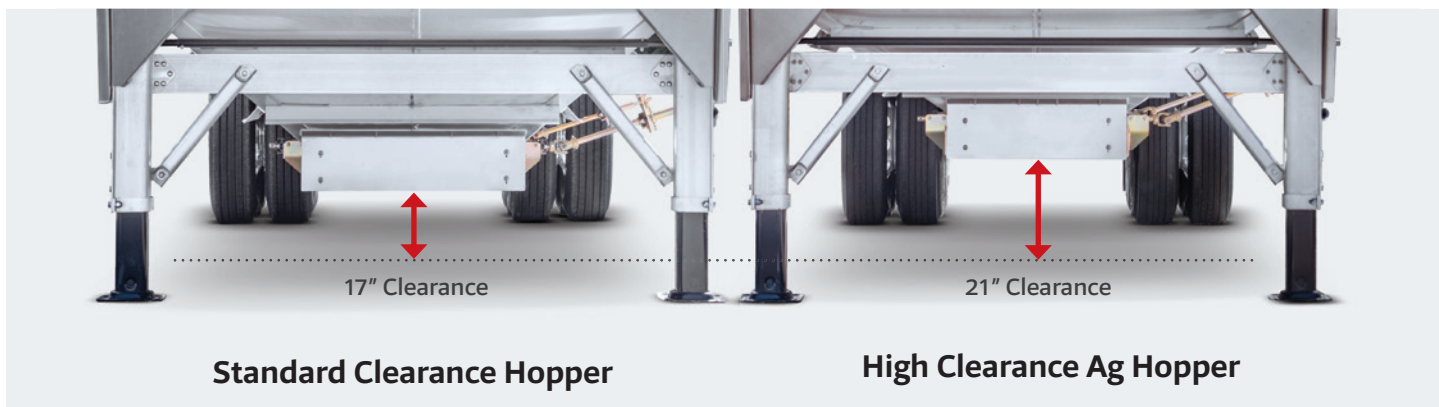


Dual-Dual-Dual Fully Equalizing Rear Lift

Shown: DWH-750 Pacesetter™ – 50' long, 96" wide, 73" sides
9'-7" Spread with 57-1/2" equal spacing between the axles.

*Weight restrictions and allowances vary by location. Check with your local government for allowable weight limits.
Wilson Trailer sales representatives will help you decide what's best for your specific needs.*

Hopper Options



Full-width belting between landing gear legs

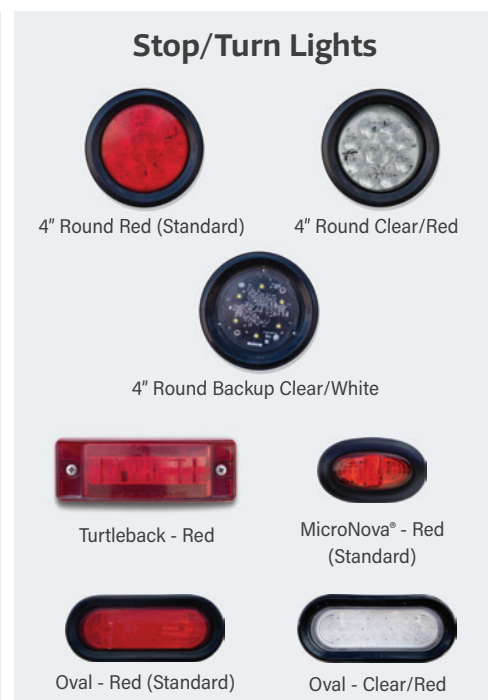
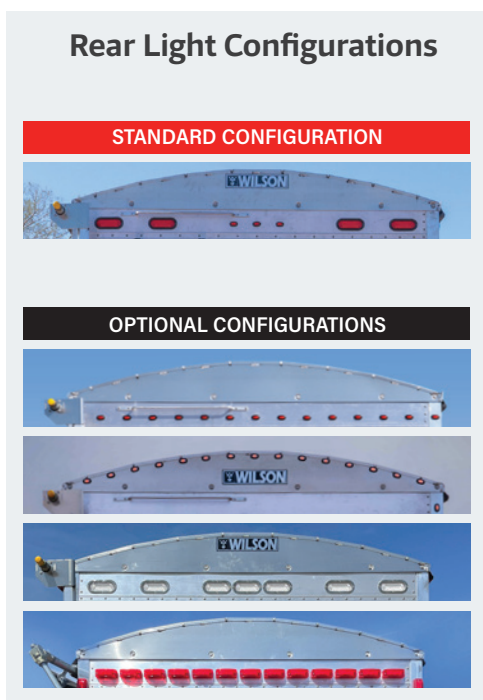


48" wide, one-piece mud flap in front of rear trap mounted to stiffener



Hopper Vibrators

Light Options





Stainless Front/Rear



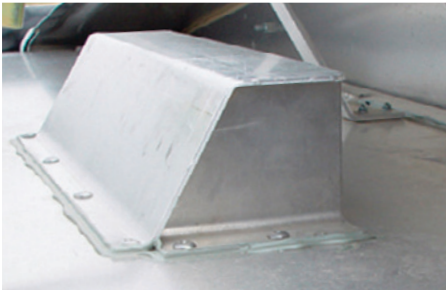
Stainless Steel Front



Stainless Steel Rear



Vent Options



Tarp Vent in False Header



Vent Cap with Roll Return



Rear Tarp Vent Cap

Additional Options



D-Rings



Pintle Hitch



Side Window



Front Mud Flap Bracket



Fold-Down Rear Ladder



I.C.C. Bumper



DIMENSIONS

SIDE HEIGHT/ OVERALL HEIGHT (APPROX)	67" 10' 6"	73" 11' 0"	79" 11' 6"	85" 12' 0"	91" 12' 6"	97" 13' 0"	103" 13' 6"	109" 14' 0"
---	---------------	---------------	---------------	---------------	---------------	---------------	----------------	----------------

**Based on 48-1/4" Fifth Wheel Height and 10" rise on tarp supports.*

LENGTHS	Lengths available from 18' 0" to 53' 0"
WIDTHS	Outside Overall: 96" nominal; 92" inside width Outside Overall: 102" nominal; 98" inside width (available as an extra cost option)

CAPACITIES

TRAILER DIMENSIONS		WATER		HEAPED 10"	
TRAP SIZE/TYPE*	TRAILER SIZE (LXWXH)	CU. FT.	BUSHEL	CU. FT.	BUSHEL
27X31 AG	34X96X67	1172	942	1315	1057
27X31 AG	34X96X73	1289	1036	1435	1153
27X31 AG	37X96X67	1258	1011	1414	1136
27X31 AG	37X96X73	1371	1102	1529	1229
27X31 AG	39X96X67	1267	1018	1423	1143
27X31 AG	39X96X73	1403	1127	1565	1258
27X31 STD	41X96X67	1402	1127	1568	1260
27X31 AG	41X96X67	1327	1066	1493	1200
27X31 STD	41X96X73	1544	1241	1714	1377
27X31 AG	41X96X73	1474	1184	1644	1321
27X31 STD	41X96X79	1715	1378	1891	1520
27X31 AG	41X96X79	1645	1322	1823	1465
27X31 STD	43X96X67	1459	1172	1633	1312
27X31 AG	43X96X67	1393	1119	1554	1249
27X31 STD	43X96X73	1613	1296	1792	1440
27X31 AG	43X96X73	1526	1226	1705	1370
27X31 STD	43X96X79	1793	1441	1978	1589
27X43 STD	43X96X73	1657	1332	1838	1477
27X43 AG	43X96X73	1577	1267	1756	1411
27X43 STD	43X96X79	1857	1492	2043	1642
27X43 AG	43X96X79	1757	1412	1941	1560
27X43 STD	43X96X85	1973	1585	2159	1735
27X43 AG	43X96X85	1933	1553	2119	1703
27X43 STD	45X96X79	1912	1536	2106	1692
27X43 AG	45X96X79	1821	1463	2014	1618
27X43 STD	45X96X85	2091	1680	2286	1837
27X43 AG	45X96X85	2000	1607	2194	1763
33X31 AG	34X102X73	1370	1101	1525	1225
33X31 AG	41X96X67	1331	1070	1496	1202
33X31 AG	41X102X67	1426	1146	1615	1298
33X31 STD	43X102X67	1561	1254	1745	1402
33X31 AG	43X102X67	1458	1172	1643	1320
33X31 STD	43X102X73	1722	1384	1913	1537
33X31 AG	43X102X73	1647	1323	1845	1483
33X43 STD	43X102X79	1974	1586	2172	1745
33X43 AG	43X102X79	1880	1511	2100	1687
33X43 STD	43X102X85	2150	1728	2348	1887
33X43 AG	43X102X85	2065	1659	2263	1818
33X43 STD	45X102X79	2059	1655	2266	1821
33X43 AG	45X102X79	1946	1564	2155	1732
33X43 STD	45X102X85	2232	1794	2439	1960
33X43 AG	45X102X85	2139	1719	2347	1886
TRI-AXLE CAPACITIES					
DUAL/DUAL/SINGLE 33X31 AG	50X96X73	1616	1299	1794	1442
DUAL/DUAL/DUAL 33X31 AG	50X96X73	1597	1283	1772	1424

* AG = Ag Hopper

* STD = Standard Ground Clearance (Commercial)

Volumes were calculated using a 114" landing gear and a 49" spread tandem. Additional side heights of 90", 96", and 102" as well as tri-axle and spread axle configurations are available. A 701 model will add 5.5% in volume (for example: a 41'x96"x67" (two axle configuration only) with a 27"x31" AG trap would have a water level volume of 1,383 Cu. Ft. and a heaped volume of 1,545 Cu. Ft.).

Ask your authorized Wilson Sales Representative for capacity information on any additional sizes.

Choose from 5 Side Skin Finishes

- ☐ WHITE (STANDARD)
- ☒ BLACK (OPTIONAL)
- ☒ GUNMETAL (OPTIONAL)
- ☒ PEWTER METALLIC (OPTIONAL)
- ☒ STAINLESS STEEL (OPTIONAL)



Additional Models

Wilson Trailer designs and builds a variety of versatile commodity trailers. Whether hauling grain, mulch or even aggregate, the most advanced hauling equipment can be found with the Pacesetter and Commander lines of Wilson Trailer.



Pacesetter™ Straight Floor Trailer



Pacesetter™ Quad Axle
with Gunmetal Sides



Pacesetter™ Spread Axle with
Front Lift Axle and Black Sides



Pacesetter™ Tri-Axle with
Gunmetal Sides



Pacesetter™ Triple Train
with White Sides



Pacesetter™ A-Train Doubles

NOTICE: All visual representations, dimensions, and specifications contained in this literature are based on the latest product information available at time of publication approval. The right is reserved to make changes in materials, equipment, design, specifications and models; and to discontinue models. The Pacesetter, Commander, RollerTrap, HydroTrap and WTC logos, the name Wilson Trailer and the phrase "Since 1890...A Good Name to Have Behind You!" are trademarks and registered trademarks of Wilson Trailer Company. The ShurLink Pro, ShurLink EZR, ProTrap, MAXXTRAP, AutoTrap, LiteAll, DiamondCore and Shurco logos are trademarks and registered trademarks of Shur-Co, LLC. © 2025 Wilson Trailer Company All Rights Reserved.



4400 S. Lewis Blvd.
Sioux City, IA 51106
800-798-2002 • Fax 712-252-6510
wilsontrailer.com | email: sales@wilsontrailer.com