

# Wilson Trailer Company

## Operators Manual for TRAILERS or TRUCK BODIES with Livestock Hydraulic Lifting Decks



This manual has been prepared to help you operate your Wilson Livestock Lifting Deck Trailer successfully, economically, and safely. Should you have any questions, we ask that you contact a Wilson Trailer Company factory representative immediately for a clear explanation.

**NOTE: Wilson designs and builds many custom variations in its products. Your trailer or truck body may vary from the equipment described and/or pictured in this manual.**

We thank you for expressing your confidence in us through the purchase of your new Wilson Livestock trailer or truck body. We want you to know that it was designed to meet your specific needs and was built for long life and low cost operation. With regular, proper maintenance and your common sense use, we are confident that it will do so.

This manual applies to trailers and truck bodies made after 8/2014.



---

Additional manuals and decal kits for this trailer are available without charge.

---

MODEL NO.

SERIAL NO.

---

---

# Livestock Lifting Deck Operator's Manual



This safety alert symbol is to raise your awareness to important messages in this manual. When you see this symbol, be alert to the possibility of personal injury and carefully read the message that follows.

## TABLE OF CONTENTS by SECTION

### **GENERAL INFORMATION**

General Description .....	1-1
Loading and Transport of Livestock.....	1-1
Modification of Trailer.....	1-1

### **SAFETY**

Decals and Emblems.....	2-1
-------------------------	-----

### **OPERATION**

Livestock Lifting Deck-2 Layers .....	3-1
Livestock Lifting Deck-3 Layers .....	3-2
Operating the Trailer .....	3-2
Loading 3 Layers of Hogs.....	3-3
Unloading 3 Layers of Hogs.....	3-4
Loading 2 Layers of Sows/1 Layer of Cattle .....	3-6
Unloading 2 Layers of Sows/1 Layer of Cattel....	3-7
Deck Supports .....	3-7
Sprinkler System.....	3-8
Biosecurity Platform.....	3-8

### **LUBRICATION**

Lift Cables.....	4-1
Pulleys .....	4-1

### **ROUTINE INSPECTION**

Lift Cables.....	5-1
Rope End Fittings.....	5-1
Pulleys .....	5-2

Hoses.....	5-2
Rope Guides.....	5-2
Trolley Wheels / Guides .....	5-3
Deck Guides.....	5-3
Gate to Deck Crash Indicator .....	5-3
Deck Supports .....	5-4
Top Deck Proximity Sensor.....	5-4
Ice Scrappers.....	5-4

### **COMPONENT PICTURES**

Hydraulics.....	6-1
Deck Support.....	6-2
Connections.....	6-3
Deck Connections.....	6-4
Deck Operation .....	6-4

### **SCHEMATICS**

Hydraulic Schematics.....	7-1
Pneumatic Schematics.....	7-2

### **ELECTRICAL**

Electrical Circuit and Parts.....	8-1
-----------------------------------	-----

### **TROUBLESHOOTING**

Troubleshooting Guide.....	9-1
----------------------------	-----

### **CONSUMER INFORMATION**

Certificate of Limited Warranty.....	10-1
New Trailer Certificate of Limited Warranty.....	10-2
Extended Warranty Schedule .....	10-3
Index.....	10-4



## General Description

Wilson Trailer Company manufactures and sells custom livestock lifting deck trailers and truck bodies that allow the direct elevation of livestock with minimum animal stress by avoiding the use of inclined ramps.



### **WARNING**

**The lifting system is intended to be used to lift livestock only. It is not for lifting people**

Movement of the lift able decks are accomplished by various cable and pulley arrangements. The force to move the cables is provided by a hydraulic cylinder. The cylinder provides for level and smoothly controlled lifting of the deck.

Hydraulic power for the system can be provided by a trailer mounted engine driven pump, or a trailer mounted electric driven pump or by a truck mounted power take off (PTO) driven pump.

The decks are held up by air cylinder operated supports. It is important that all of the supports are in place and that the lift cables are slack before moving the trailer. The cables are not removable from the deck.

There are many versions of these livestock lifting deck trailers and truck bodies in use today, each having customized interiors to suit the needs of the customer.

## Loading and Transport of Livestock

The loading of the trailer is important! Keep the center of gravity as low as possible. Proper placement of the larger animals should be considered.

Because load types vary, the driver needs to drive with appropriate care and within the limits of the load.

The well-being of the livestock is dependent on the stock density, ventilation, the standard of driving, and quality of roads.

**Frequent inspection and careful driving cannot be over-emphasized!**

## Modification of Trailer

Any modification made to the trailer must comply with DOT and NHTSA regulations and must not compromise the gross vehicle weight rating (GVWR) of the trailer.



### **WARNING**

**Any operation of the trailer outside the limitations stated in this manual will void any responsibility of Wilson Trailer Company for any of its results.**

# SAFETY

## DECALS AND EMBLEMS

The following section contains the decals and emblems used on Wilson Livestock Trailers. Due to differences in configurations and equipment, your trailer may or may not use all the decals and emblems listed. Newer trailers may also have decals and emblems that differ from older trailers. Replace damaged or missing decals promptly.

AAA-06462-BM



AAA-06462-DK



AAA-06891-LU



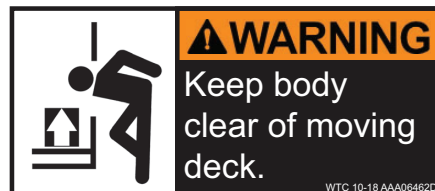
AAA-06462-DM



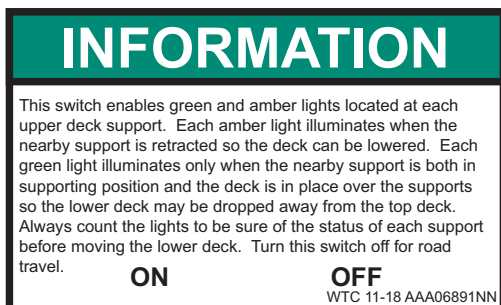
AAA-06891-LX



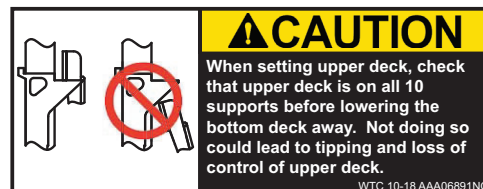
AAA-06462-DL



AAA-06891-NN



AAA-06891-NO





### Livestock Lifting Deck - 2 Layers with Cylinder Mounted on Roof



#### WARNING

**Avoid standing under lift deck when it is suspended only by the steel cables. During normal livestock transport operation, the deck should be supported by the floor, or by the intended deck supports, not by cables. When positioning the manual supports under the deck, deploy the air operated supports that are also under the deck before entering the trailer. People should never be on or under the deck when it is moving.**



There are 3 positions in which the lift deck can be used:

1. Completely lowered to rest on bottom deck for loading.
2. The over the road transport position uses the air operated deck supports controlled by the palm valve. This position is used to transport two layers of hogs.
3. The clean out position is in the highest setting which will use the manual operated supports. This position is used when transporting cattle.

To raise livestock on the lift deck from the floor:

1. Start wet kit engine or tractor driven hydraulic pump.
2. Inspect interior of the trailer before moving the lift deck to make that there is nothing to interfere within the full range of motion of the lift deck.
3. Make sure deck supports are in the stored position.
4. Load the livestock onto the deck, shut gates.
5. Using the lever valve, raise the lift deck high enough to allow the deck supports to deploy under the deck.
6. Using the palm valve, deploy the deck supports to the support position.
7. Using the lever valve, lower the lift deck onto the supports.
8. Make sure the ropes are just slack and the deck is fully upheld by all of the supports.
9. Shut off pump.

To lower lift deck:

1. Start wet kit engine or tractor driven hydraulic pump.
2. Inspect interior of the trailer before moving the lift deck to make that there is nothing to interfere within the full range of motion of the deck. Make sure lower crowd gates are stored to the side before lowering lift deck and deck is empty.
3. Raise the lift deck off the supports only enough to allow the supports to rotate into the stored position
4. Use palm valve to flip the deck supports to the stored position allowing the deck to pass.
5. Use lever valve to lower deck until it has reached desired position.
6. Lower the deck to the floor until ropes are slightly slack, shut off pump.

Hydraulic temperature:

If operating lift deck for extended period of time be sure the hydraulic reservoir temperature gauge does not exceed 180 degrees. If the system runs hot, shut off the pump, let the system cool and then operate.

## OPERATION

### Livestock Lifting Deck - 3 Layers with Cylinder Under the Trailer



**Avoid standing under lift deck when it is suspended only by the steel cables. During normal livestock transport operation, the deck should be supported by the floor, or by the intended deck supports, not by cables. People should never be on or under the deck when it is moving. Before starting loading/unloading operation make sure nothing is in a danger area both inside or outside the trailer.**

### Operating the Trailer



The control panel for operating the lift deck is located on the rear driver's side.

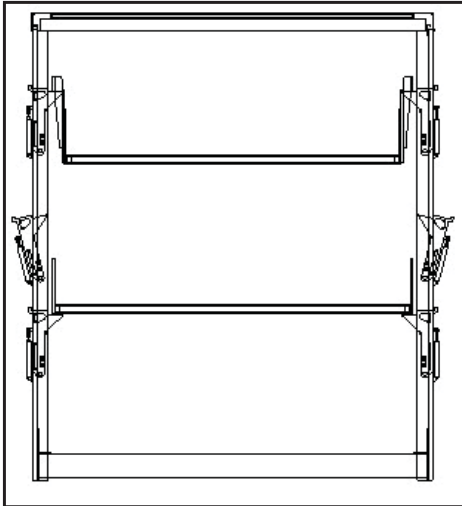
#### **Check list before operating the trailer**

- Make sure the hydraulics hose ends are free of dirt and connected to the right terminals.
- Make sure air and electricity is hooked up to the trailer.
- Inspect interior of the trailer before moving the lift decks to make sure that there is nothing to interfere within the full range of motion of the lift deck. Make sure all gates are stowed and locked in place.
- Make sure no one is inside the trailer.
- Make sure there is no one near the trailer. If anyone is near, make sure they are aware of the trailer operation.
- Make sure deck supports are in the stored position.
- Make sure no object is protruding into the trailer through the side openings.



## OPERATION

### Loading 3 Layers of Hogs



3 Layers of Hogs



- Start wet kit engine or tractor driven hydraulic pump.
- Turn on the light switch near the control panel.
- Load the hogs in the top deck.
- Secure the crowd gates and the drop-in gate.
- Close all access doors so animals that are loaded do not exit while the deck is moving.
- Using the lever valve, raise the lift decks high enough to allow the top deck supports to deploy under the upper deck support.
- Using the palm valve, deploy the top deck supports to the support position.
- Using the lever valve, slowly lower the lift decks. The green lights start to turn on.
- All the **10 green lights should be on** before moving the lower deck away from the top deck. For proper support, the deck should be supported on all 10 supports. Failure to do so can cause the deck to not be properly supported.
- The green light indicates that the nearby support is in the supporting position and the deck is in place over the supports.
- Lower the lever valve so the bottom lift deck moves down until the deck sits on the floor and the ropes are slightly slack.
- Load the hogs in the bottom lift deck.
- Secure the crowd gates and the drop-in gate.
- Check to make sure all access doors are closed so animals that are loaded do not exit while the deck is moving.
- Using the lever valve, raise the bottom lift deck high enough to allow the bottom deck supports to deploy under the bottom lift deck.
- Do not over lift. Doing so can cause the gates to crash into the bottom of the top deck.

# OPERATION

### Loading 3 Layers of Hogs



- Using the palm valve, deploy the bottom deck supports to the support position.
- Using the lever valve, slowly lower the bottom lift deck onto the supports.
- Make sure the ropes are just slack and the deck is fully upheld by all of the 10 supports. For proper support, the lift deck should be supported on all 10 supports. Failure to do so can cause the deck to not be properly supported.
- Do not over lift. Doing so can cause the gates to crash into the bottom of the top deck.
- Shut off pump.
- Load the hogs on the floor deck.
- Secure the crowd gates.
- Turn off the light switch for road travel. This will turn off the Green lights.

### Unloading 3 Layers of Hogs

- Unload hogs from the floor deck.
- Start wet kit engine or tractor driven hydraulic pump.
- Turn on the light switch near the control panel.
- Make sure lower crowd gates are stored to the side before lowering the deck and the deck is empty.
- Use lever valve to raise the bottom lift deck off the supports only enough to allow the supports to move out.
- Do not over lift. Doing so can cause the gates to crash into the bottom of the top deck.
- Use palm valve to flip the bottom deck supports out allowing the bottom deck to pass.
- Make sure all 10 supports are out. Failure to do so can cause the deck to not have clearance for lowering.



## OPERATION

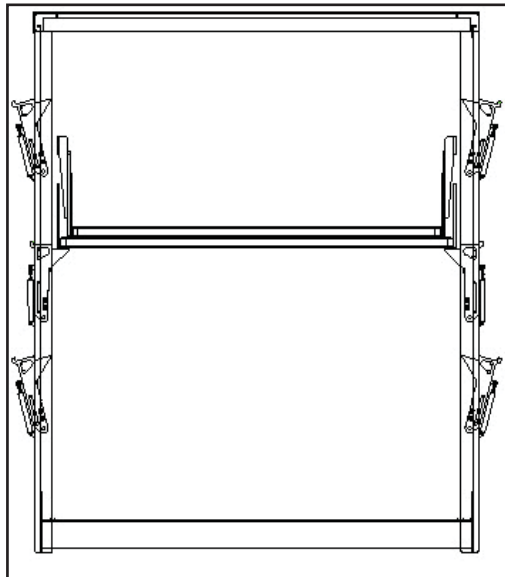
### Unloading 3 Layers of Hogs

- Use lever valve to lower the deck until it has reached the bottom and sits on the floor deck and the ropes are slightly slack.
- Remove the drop-in gate and open the crowd gates to unload the hogs
- Make sure lower crowd gates are stored to the side and the deck is empty.
- Using lever valve, raise the bottom lift deck until the bottom lift deck contacts the top lift deck and raises the top lift deck enough to allow the top supports to move out.
- At this time the green lights should turn off.
- Use palm valve to flip the top deck supports out allowing the top deck to pass. This should turn on all the 10 amber lights.
- Make sure all the **10 amber lights are on**. If not, raise the deck up slowly so that the supports can move out. Failure to do so can cause the deck to not have clearance for lowering.
- The amber light indicates that the nearby support is retracted and the deck can be lowered.
- Lower the lever valve so both the decks move down until they sit on the floor and the ropes are slightly slack.
- Remove the drop-in gate and open the crowd gates to unload the hogs.
- Secure the crowd gates.
- Turn off light switch.
- Shut pump off.



## OPERATION

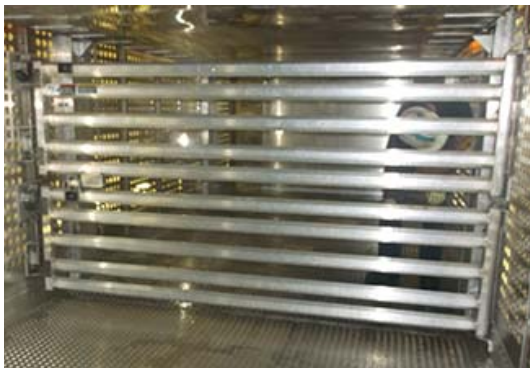
### Loading 2 Layers of Sows/1 Layer of Cattle



2 Layers of Sows/1 Layer of Cattle

- Start wet kit engine or tractor driven hydraulic pump.
- Load the sows in the top deck. Distribute the weight evenly on the three compartments.
- Secure the crowd gates and the drop-in gate.
- Close all access doors so animals that are loaded do not exit while the deck is moving.
- Using the lever valve, raise the lift decks high enough to allow the middle deck supports to deploy under the bottom lift deck.
- Using the palm valve, deploy the middle deck supports to the support position.
- Using the lever valve, slowly lower the lift decks onto the supports.
- Make sure the ropes are just slack and the deck is fully upheld by all of the supports. For proper support, the deck should be supported on all 10 supports. Failure to do so can cause the deck to not be properly supported.

### Gate Extensions



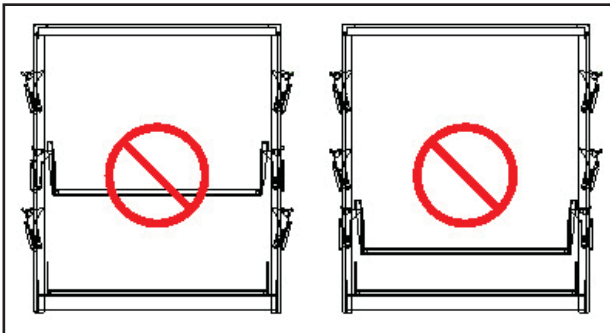
- Shut off pump.
- Load the sows on the floor deck.
- Secure the crowd gates.
- For Cattle transports, leave the lift decks empty onto the middle support.
- For Cattle transport, use the gate extensions

## OPERATION

### Unloading 2 Layers of Sows/1 Layer of Cattle

- Unload sows from the floor deck.
- Start wet kit engine or tractor driven hydraulic pump.
- Make sure lower crowd gates are stored to the side before lowering the deck and the deck is empty.
- Use lever valve to raise the lift decks off the supports only enough to allow the supports to move out.
- Use palm valve to flip the middle deck supports out allowing the decks to pass.
- Make sure all 10 supports are out. If not, raise the deck up slowly so that the supports can move out. Failure to do so can cause the deck to not have clearance for lowering.
- Use lever valve to lower the deck until it has reached the bottom and sits on the floor deck and the ropes are slightly slack.
- Remove the drop-in gate and open the crowd gates to unload the sows.
- Secure the crowd gates.
- Shut pump off.

### Deck Supports



#### CAUTION

**Do not set the top deck on the middle or bottom deck supports as they do not have the deck position lights.**

## **OPERATION**

### **Sprinkler System**



The trailer is equipped with a sprinkler system consisting of 3 layers of mist nozzles. Connect a garden hose to the supply line located on the driver side of the trailer. Individual controls are available for the top, middle and bottom layers of nozzles.

Remove water from sprinkler system in cold weather. Water in hoses can freeze. Freezing water can damage hoses, valves, and nozzles.



### **Biosecurity Platform**

The trailer may be equipped with a Biosecurity platform located on the rear driver side. Use the support bar at the bottom to hold the platform. Secure the platform to the side of the trailer after use. Slide in the support bar and lock it in place for road travel.





## LUBRICATION

### Lift Cables (wire rope)



Lubricate the wire rope with spray lube or drip oil. Apply the lube for the length of the rope for best corrosion and wear resistance. Or for minimal protection against wear, apply lubricant for the lengths of rope that bend as it travels over pulleys. Bending causes most rope wear as the small wires move with respect to each other and rub as the rope bends over a pulley.

Use a lubricant that penetrates and leaves behind a component such as lithium, graphite, or molybdenum disulfide. Lubricate the ropes at least monthly. Trailer washing may require lubricating more often. Lubricate with ropes unloaded and slightly slack. (White lithium aerosol CRC brand, Wilson Trailer Co. part APP03640A, 16 oz can).

### Pulleys



The lift system may consist of multiple pulleys located both on the inside and the outside of the trailer.

If the cable pulleys are equipped with grease fittings, they should be greased monthly. Trailer washing may require greasing more often. Remove dirt from pulleys. Lubricate the pulleys with ropes unloaded and slack. Rotate the pulleys while greasing. Use a good quality grease with an EP additive (such as Pennzoil 705 white grease, Wilson Trailer Co part APN03050, tube).



## **ROUTINE INSPECTION**

### **Lift Cables**



Inspect the wire rope lifting cables for their full length at least once a week. Look for kinks, wear, corrosion, fraying or broken wires and unusual wear. Replace compromised cables.

Your trailer may have certain rope end fittings that require special assembly instructions. Refer to the link below.

<http://www.esmet.com/pdf/Electroline%20Assembly%20Instructions.pdf>



### **Rope End Fittings**

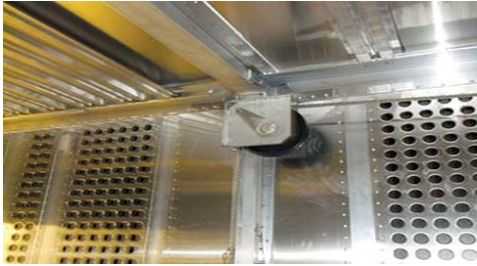


Inspect the fittings that secure the rope to the deck or trolley for looseness, corrosion, or unusual wear each week.



## ROUTINE INSPECTION

### Pulleys



Inspect all pulleys each week. With the pulley unloaded and the rope slack, rotate the pulley by hand. Feel and listen for unusual friction, noise, vibration, or increased wobble, etc. Inspect for unusual wear caused by the contact of the rope. Clean debris that can wedge between pulleys and their structural brackets.



### Hoses



Inspect hydraulic hoses, water tubing, and pneumatic hoses for kinks, cracks, cuts, or any visible defects. Inspect for leaks on hoses and fittings.

### Rope Guides



There are rope guides installed at specific locations along the length of the rope. The ropes also pass through some clearance holes. Inspect these every week to make sure the ropes are not in contact with metal when the rope is under tension.



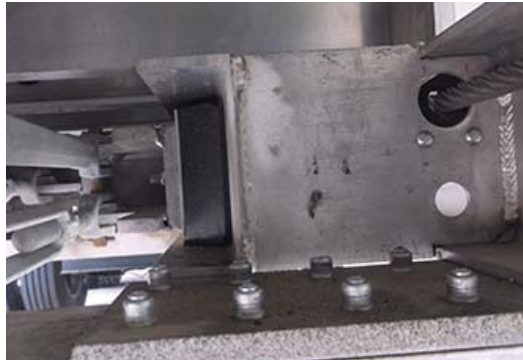


# ROUTINE INSPECTION

## Trolley Wheels / Guides



The trolley slides inside the channels. Clean the wheels/wear pads and the inside of the channel once a week. Inspect the wheels/wear pads on the trolley once a week for unusual wear. Check for wear, gouges on the inside surface of the channel. Inspect for improper tracking or movement as the deck is lifted and lowered.

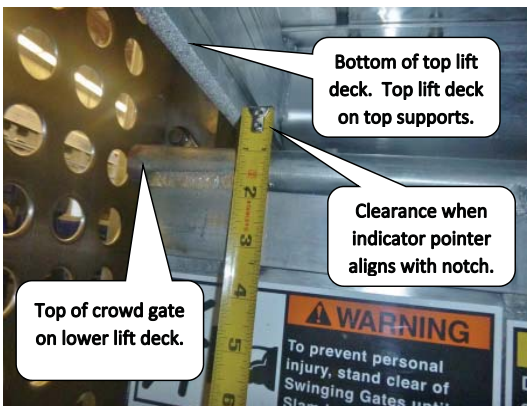


## Deck Guides

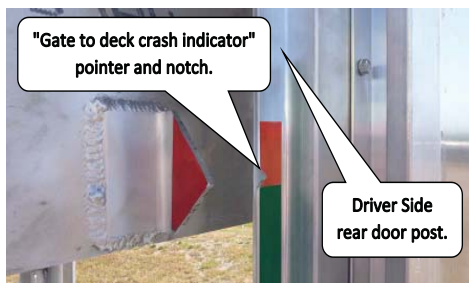


The decks are equipped with Fore-and-aft / side to side guides. Inspect the plastic deck guides on both the decks once a week for unusual wear or damage. Check the fasteners that hold the plastic guides to the deck.

## Gate to Deck Crash Indicator



Your hydraulic double lift deck trailer may have an indicator that tells when the lower lift deck's crowd gate is close to the bottom of the upper lift deck. This works only when the upper lift deck is on top supports.



When the pointer and notch align, the crowd gate is very close to the bottom of the upper lift deck and lifting of the lower deck should immediately stop.

(Rev. 09-17)



## ROUTINE INSPECTION

### Deck Supports



Inspect all deck supports for proper operation and for unusual wear or damage once a week. Make sure they can fully deploy and retract and that they do not stick while moving.



### Top Deck Proximity Sensor

There are proximity sensors to indicate the position of the top supports and the location of the Top deck relative to the top support. Check function of the sensors, by pushing the support out. The amber light should turn on. Using the palm valve deploy the top deck supports to the support position.

### Ice Scrapers



The pulleys outside of the trailer have plastic ice scrapers installed. Check the scrapers weekly to make sure they do not contact the pulleys but close enough to scrap ice off the pulleys.

# COMPONENT PICTURES

## Hydraulics



Hydraulic Power Unit  
Engine Driven



Hydraulic Power Unit



Hydraulic Power Take Off Reservoir  
Truck Mounted



Hydraulic Directional Valve



Load Holding Hydraulic Valve  
Mounted to Hydraulic Cylinder



Hydraulic Cylinder with Rope Ends  
Connected to Wheeled Trolley



# COMPONENT PICTURES

## Hydraulics



Pressure/Return Connections



Cylinder Connection

## Deck Support



Air Operated Deck Support Retracted



Air Operated Deck Support Deployed



Deck support Air Cylinder Actuator



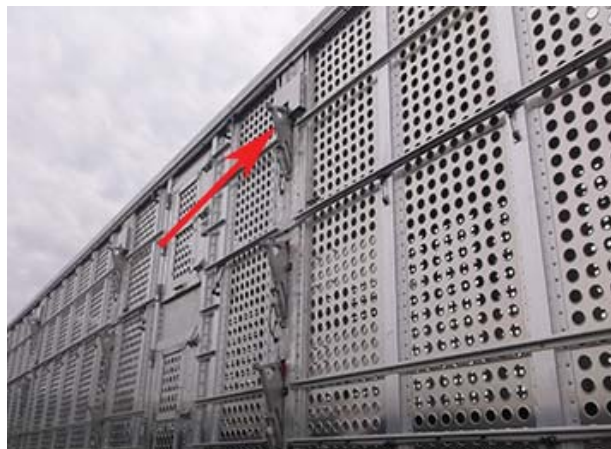
Manual Deck Support Stored

# COMPONENT PICTURES

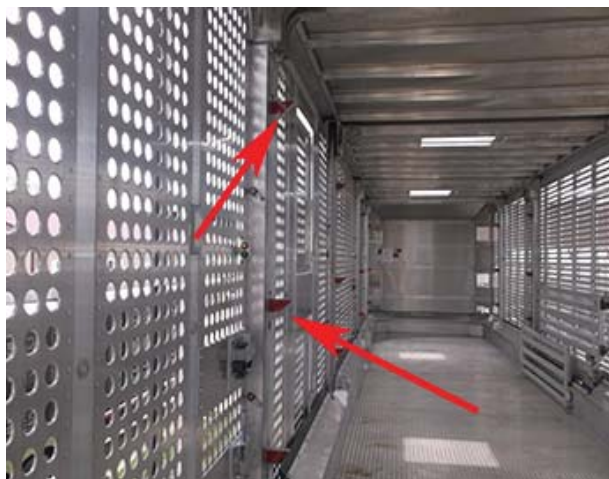
## Deck Support



Raise Empty Deck Above Supports and Lower Support with Pin

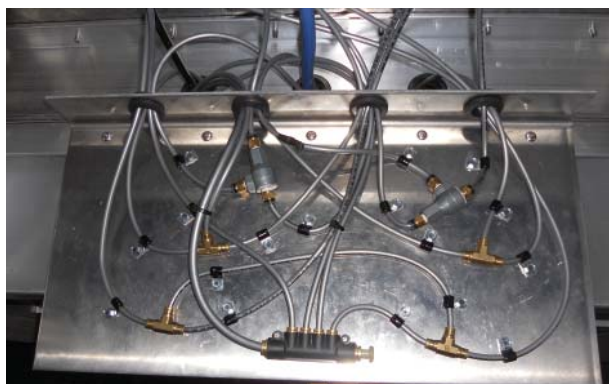


Deck Support Retracted



Deck Support Extended

## Connections



Air Control Tubing for Deck Support (Uncovered)



Trolley with Adjustable Rope Connections

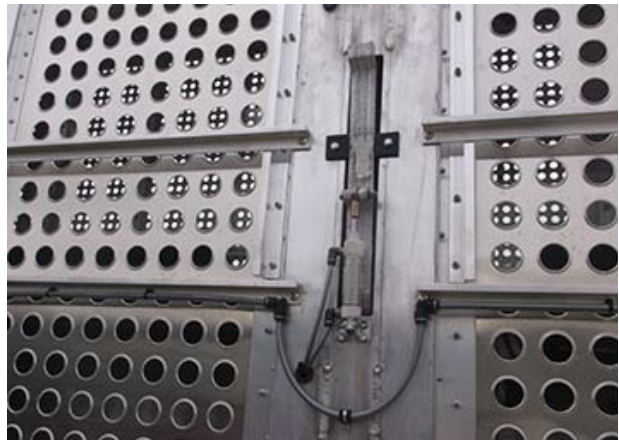


# COMPONENT PICTURES

## Connections



Cylinder Connection



Pneumatic and Water Connection

## Deck Connections



Pulley



Deck Connection

## Deck Operation



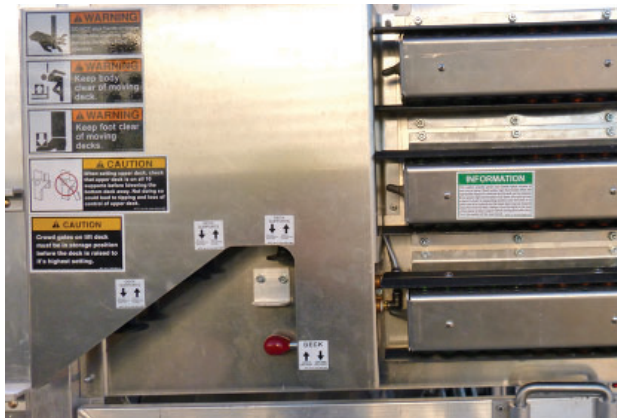
Air Controls for Deck Support Rear Station



Air Control Valves for Deck Support

# COMPONENT PICTURES

## Deck Operation



Alternate Control Station with Indicator Lights for 3 Levels of Deck Settings



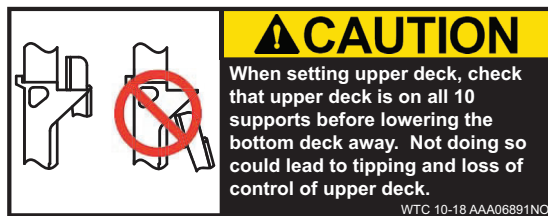
Operation info for Deck Support Indicator Lights



Control Station Function Labels



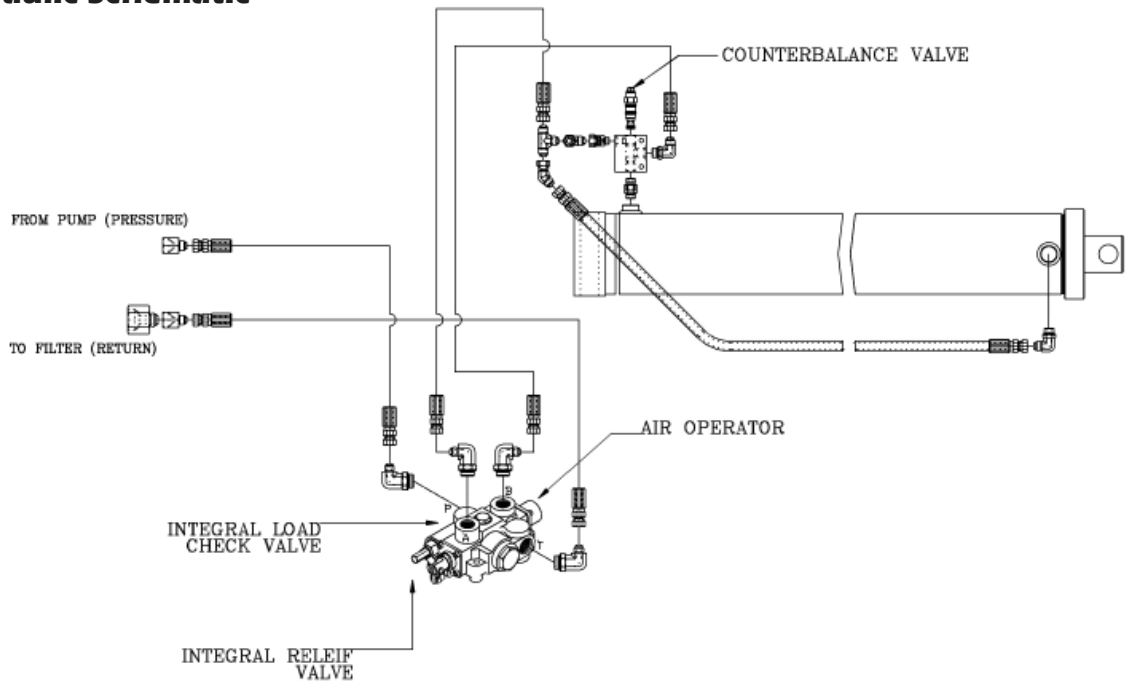
Warning and Caution Labels at Control Station



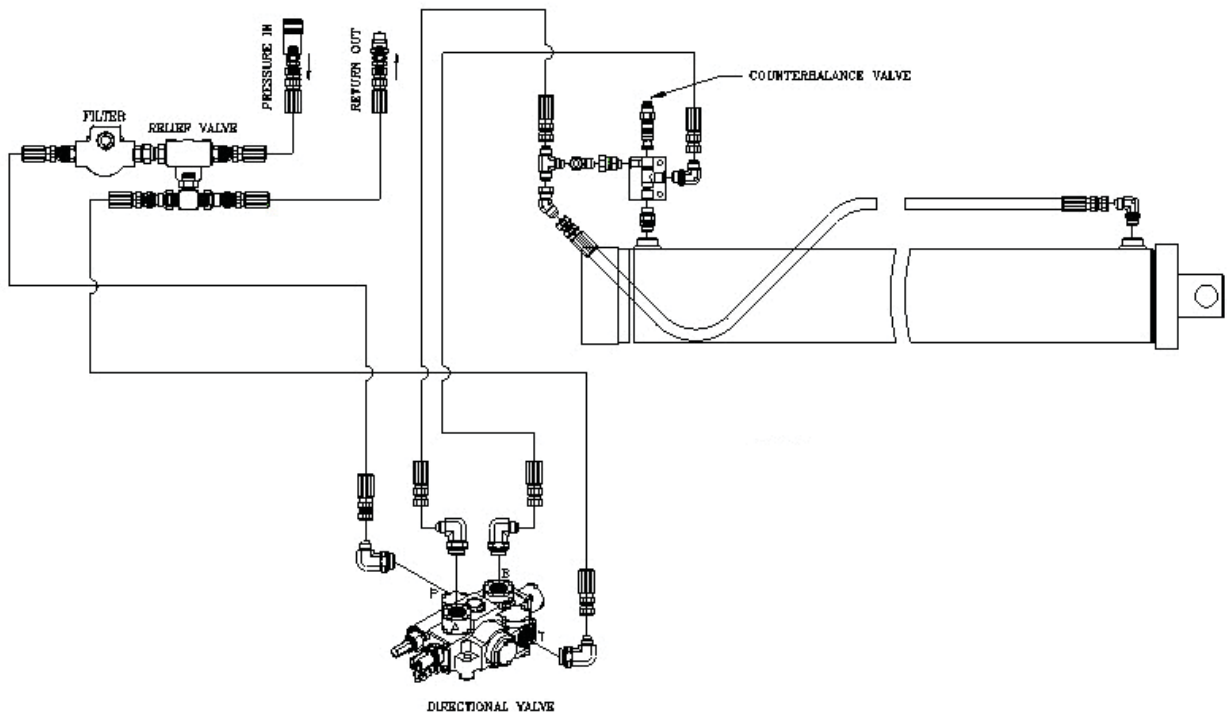
Deck Support Caution Label

# SCHEMATICS

## Hydraulic Schematic



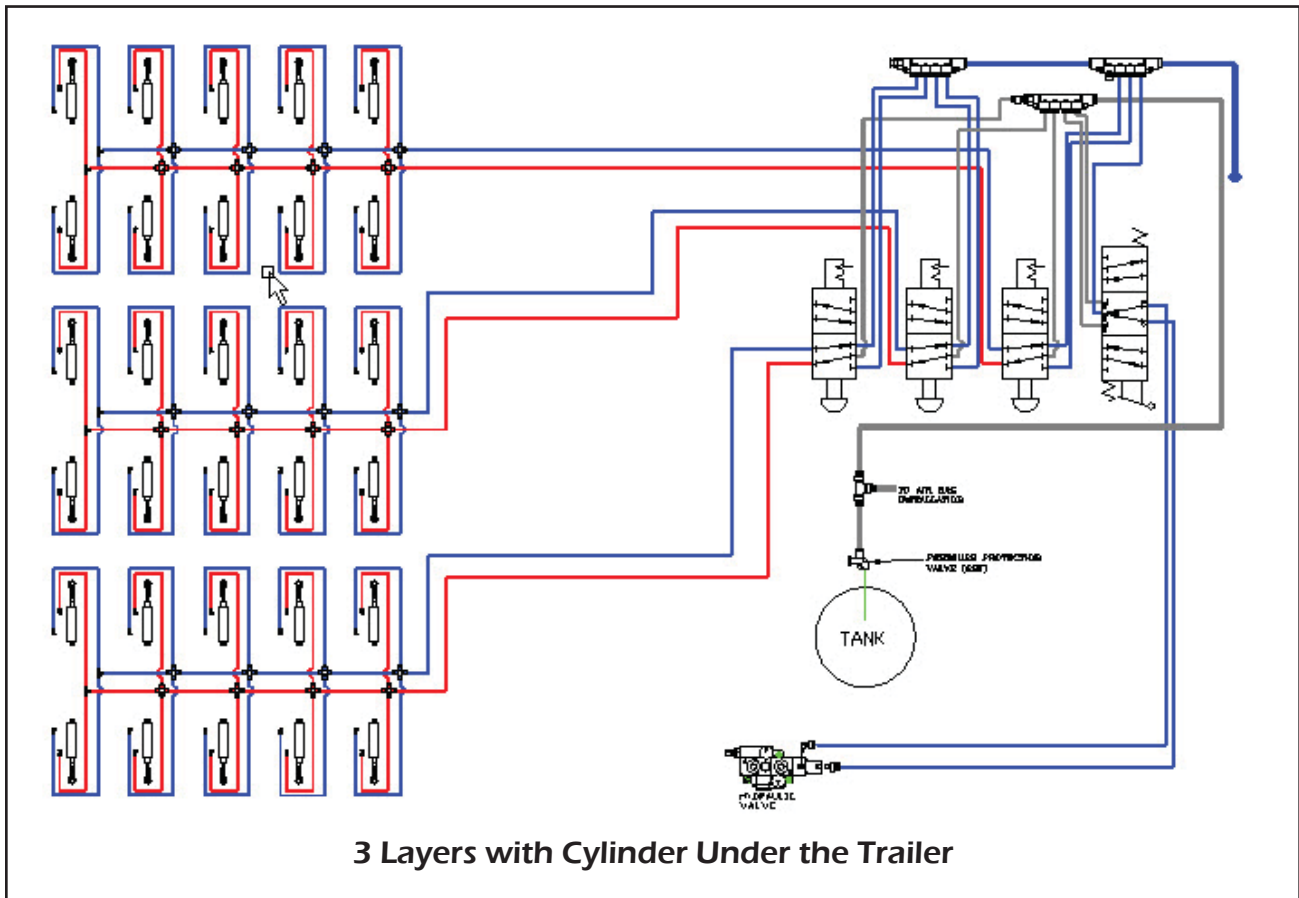
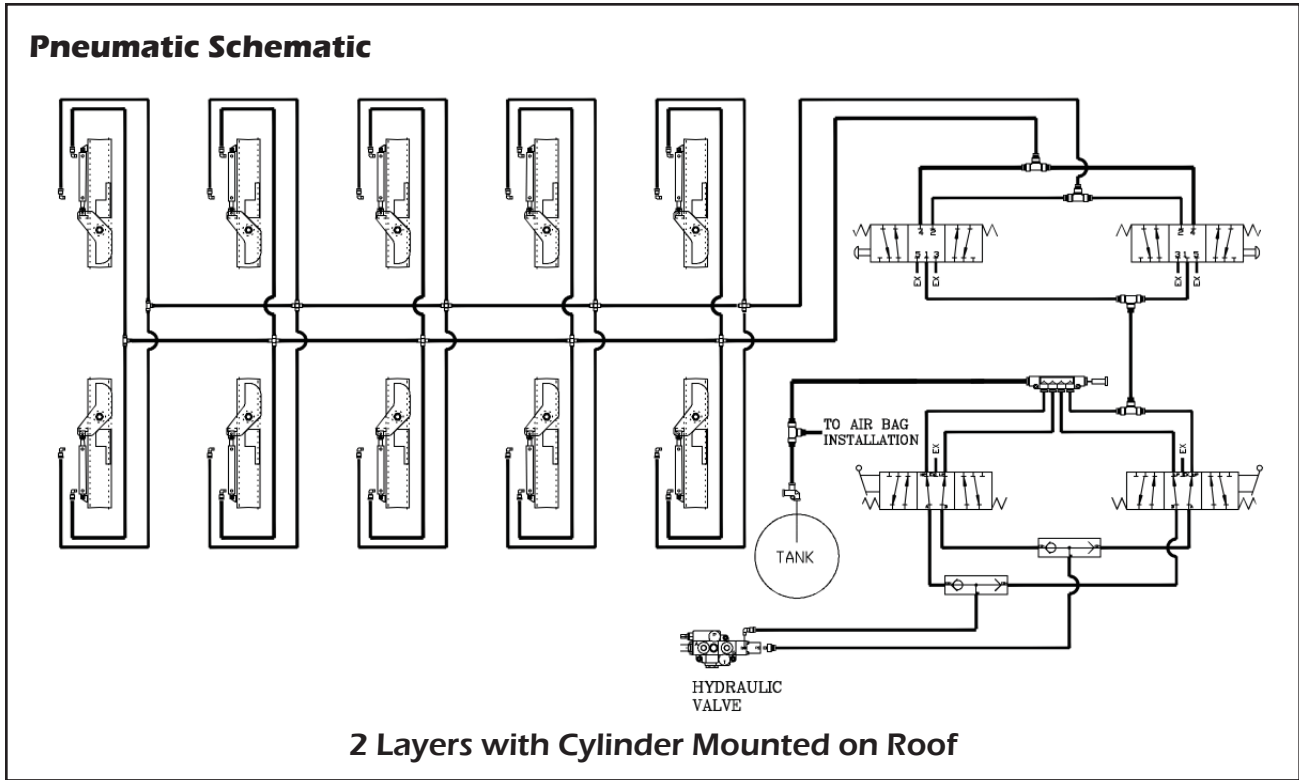
2 Layers with Cylinder Mounted on Roof



3 Layers with Cylinder Under the Trailer



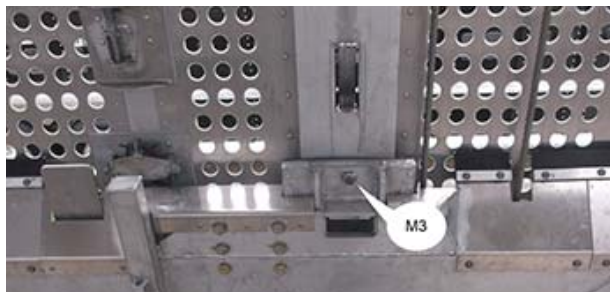
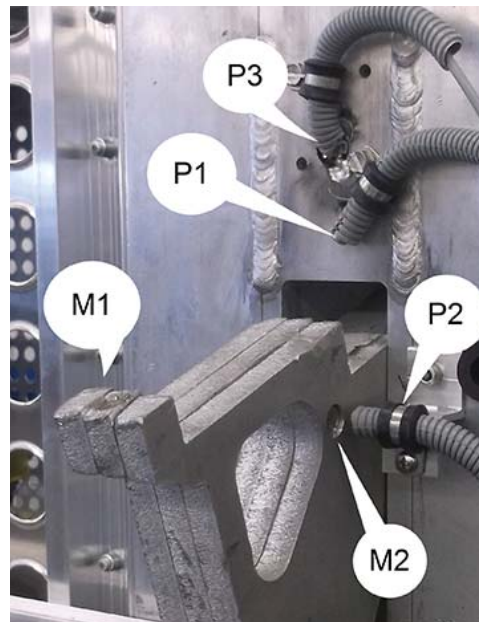
# SCHEMATICS





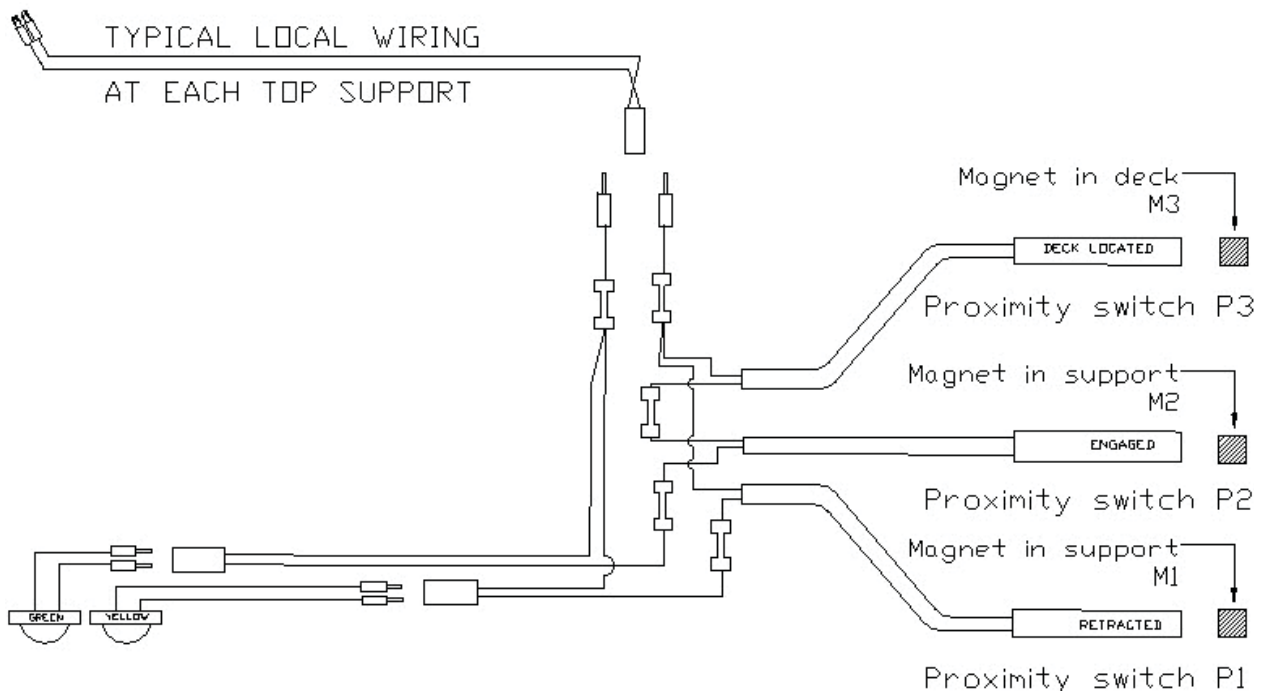
# ELECTRICAL

## Electrical Circuit and Parts - 3 Layers with Cylinder Under the Trailer



M1, M2, M3 = Magnets

P1, P2, P3 = Corresponding Magnetic Proximity Switches



## TROUBLESHOOTING

### Troubleshooting Guide

#### **Lift Deck Does Not Raise or Lower**

1. Check engine. Make sure the PTO is turned on. Turn on PTO.
2. Check hydraulic connections. Make sure they are connected to the right fittings. Check for oil leaks. Identify and replace hose if necessary. Tighten connections.
3. Make sure all fluid connections are tight. Tighten connections. Do not overtighten.
4. Check for oil leaks. If low, top off with clean oil. Use 10WGT.AW32. Cylinder should be in retract position while filling oil or tank may overflow when retracting cylinder.
5. Check control valve for sticking/jamming. Repair or replace.

#### **Deck Supports Do Not Extend or Retract**

1. Inspect for any obstructions for the support. Clear obstructions.
2. Check for air leaks. Loose connections, damaged hose. Tighten connections, replace hose.
3. Check control valve for sticking/jamming. Repair or replace.

#### **Deck Location Lights Do Not Work**

1. Make sure indicator light is turned on. Turn on the lights.
2. Check to see if magnets are in place and has the magnetic properties. Replace with new magnets.
3. Check for any loose connections/broken wires. Fix connections.

## **TROUBLESHOOTING**

### **Troubleshooting Guide**

#### **Sprinkler System**

1. Make sure garden hose is connected. Connect hose.
2. Make sure filter is not clogged, remove screen from filter and flush sediments from the screen. Reassemble filter.
3. Check for water leaks. Fix leaks.
4. If a particular nozzle is clogged, replace nozzle.

## **CONSUMER INFORMATION**

### **Certificate of Limited Warranty**



**The following warranty is given to the owner of each new Wilson trailer sold by Wilson Trailer or its authorized dealers in the United States and Canada during the period of time and upon the conditions set out in the Extended Warranty Schedule.**

### **Warranty Coverage**

Wilson Trailer will repair or replace, at its option, any factory-installed part that is defective in material or factory workmanship under normal use, maintenance and service. Normal use excludes any operation in excess of GVWR (gross vehicle weight rating) and any use the Owner's Manual states is not recommended. Warranty repairs will be made and adjusted in accordance with the Extended Warranty Schedule as it appears on the following page. Any repaired or replaced parts are covered only for the remainder of this warranty. All parts replaced under this warranty become the property of Wilson Trailer.

This warranty begins on the date the trailer is delivered to the first retail purchaser or the date it is first placed into service as a demonstrator or leased trailer, whichever comes first.

### **Non-coverage Items**

This warranty does not cover the following items:

- Tires.
- Axles, wheels, tires, suspension, trailer frame and other components and structure damaged through the use of single axle dump valves.
- Non-standard features or items specified by the purchaser.
- Parts that fail due to lack of required maintenance or use of non-equivalent parts.
- Normal wear or deterioration on any part.
- Any trailer normally driven outside the United States or Canada.
- The replacement of expendable maintenance items when the replacement is not due to a defect in material or factory workmanship.
- Any preowned trailer

(Rev. 07-16)



## CONSUMER INFORMATION

### New Trailer Certificate of Limited Warranty

#### To Get Warranty Service

Parts claimed to be defective in material or workmanship must be brought to the attention of Wilson Trailer or the selling dealer by taking the trailer to the dealer or by written notification within ten (10) days of discovery, and any repairs or replacement must be commenced within forty-five (45) days thereafter. Wilson Trailer has the right to inspect the claimed defect and determine whether the part is covered by this warranty. If you cannot get warranty service, or you are dissatisfied with the service or with a warranty decision, contact Technical Service and Claims Manager, Wilson Trailer, P.O. Box 6300, Sioux City, IA 51106.

#### Owner's Responsibility

As the owner of this trailer, you have the responsibility to perform the required maintenance at the proper intervals and make reasonable and normal use of the trailer.

#### Limitations and Disclaimers

Wilson Trailer disclaims any responsibility for any loss of time or use of the parts or trailers in which the parts are installed, transportation, cargo loss, or other incidental or consequential damage. Any implied warranties, including the implied warranty of merchantability and fitness for a particular purpose, are limited to the duration of this written warranty. Wilson Trailer makes no warranty as to quality or performance of its trailer other than set forth above.

Serial Number \_\_\_\_\_


G.V.W. Rating \_\_\_\_\_

Purchased By \_\_\_\_\_

Date In Service \_\_\_\_\_

Selling Dealer \_\_\_\_\_

By \_\_\_\_\_



(Authorized Signature)

(Rev. 07-16)

# CONSUMER INFORMATION

## Extended Warranty Schedule

**Per Written Warranty Conditions Covering Defect in Material and Workmanship as to Construction and Assembly and Installation Only.**

<p><b>% Allowable to owner (from date in service to original purchaser) for Material and Labor excluding component parts and accessories.</b></p>	<u>Vendor Items</u>		
	Axles	Side Structures	Dog House & Gate Latches
	Suspensions	Front Assemblies	Door Hardware
	Wheels	Rear Assemblies	Gate, Ramp, & Dog House Hinges
	Hubs and Drums	Crossmembers	Drop Leg Landing Gears
	Air Brake Valves and ABS Components	Undercarriage	Tire Carriers
	Tires	Metal Gates	Aluminum Roll-up Gates
	2 Speed Landing Gears	Dog House	Roll-up Tracks
	Axle Bearings	Metal Roof Skin	Painting (Outside Only)
	Axle Oil Seals	Roof Bows	Air Lines and Fittings
Lights and Wiring Harness	King Pin Assembly	Panel/Tool Boxes	
Axle Springs	Metal Roof Caps		
Translucent Roofs	Metal Flooring		
Lift Axle Controls	Ramps		
%	MONTHS	MONTHS	MONTHS
100	Use Vendor's Warranty Schedule	1 - 12	1 - 12
50		13-24 Months	-
0		Over 24	Over 12

**This warranty shall not apply from owner operation exceeding the GVWR rating of the trailer.**

(Rev. 11-12)

**WILSON TRAILER COMPANY**

**INDEX**

**A**

**B**

Biosecurity Platform.....3-8

**C**

Cables, Lift.....4-1

Cables, Lift.....5-1

Certificate of Limited Warranty.....10-1

Certificate of Limited Warranty, New Trailer.....10-2

Circuit and Parts, Electrical.....8-1

Crash Indicator, Gate to Deck.....5-3

Connections.....6-3

Connections, Deck (Component Pictures).....6-4

Connections (Component Pictures).....6-4

Component Pictures.....6-1

Consumer Information.....10-1

**D**

Decals and Emblems.....2-1

Deck Connections (Component Pictures).....6-4

Deck Crash Indicator, Gate to.....5-3

Deck Guides.....5-3

Deck, Livestock Lifting.....3-1

Deck Operation (Component Pictures).....6-4

Deck Proximity Sensor, Top.....5-4

Deck Supports.....3-7

Deck Supports.....5-4

Deck Supports (Component Pictures).....6-2

Description, General.....1-1

**E**

Electrical.....8-1

Electrical Circuit and Parts.....8-1

Emblems, Decals and.....2-1

End Fittings, Rope.....5-1

Extended Warranty Schedule.....10-3

Extension, Gate.....3-6

**F**

Fittings, Rope End.....5-1

**G**

Gate Extension.....3-6

Gate to Deck, Crash Indicator.....5-3

General Description.....1-1

Guides, Deck.....5-3

Guides, Rope.....5-2

Guide, Troubleshooting.....9-1

**H**

Hogs, Loading 3 Layers of.....3-3

Hogs, Unloading 3 Layers of.....3-4

Hoses.....5-2

Hydraulics (Component Pictures).....6-1

Hydraulic Schematic.....7-1

**I**

Ice Scrappers.....5-4

Indicator, Gate to Deck Crash.....5-3

Index.....10-4

Information, Consumer.....7-1

Inspection, Routine.....5-1

**K**

**L**

Lift Cables.....4-1

Lift Cables.....5-1

Lifting Deck - 2 Layers, Livestock.....3-1

Lifting Deck - 3 Layers, Livestock.....3-2

**L**

Limited Warranty, Certificate of.....10-1

Limited Warranty, New Trailer Certificate of.....10-2

Livestock Lifting Deck - 2 Layers.....3-1

Livestock Lifting Deck - 3 Layers.....3-2

Livestock, Loading and Transport of.....1-1

Loading 2 Layers of Sows/1 Layer of Cattle.....3-6

Loading 3 Layers of Hogs.....3-3

Loading and Transport of Livestock.....1-1

Lubrication.....4-1

**M**

Modification of Trailer.....1-1

**N**

**O**

Operating the Trailer.....3-2

Operation.....3-1

Operation, Deck (Component Pictures).....6-4

**P**

Parts, Electrical Circuit and.....8-1

Pictures, Component.....6-1

Platform, Biosecurity.....3-8

Pneumatic Schematic.....7-2

Proximity Sensor, Top Deck.....5-4

Pulleys.....4-1

Pulleys.....5-2

**Q**

**R**

Rope End Fittings.....5-1

Rope Guides.....5-2

Routine Inspection.....5-1

**S**

Safety.....2-1

Schedule, Extended Warranty.....10-3

Schematics.....7-1

Schematic, Hydraulic.....7-1

Schematic, Pneumatic.....7-2

Scrappers, Ice.....5-4

Sensor, Top Deck Proximity.....5-4

Sprinkler System.....3-8

Supports, Deck.....3-7

Supports, Deck.....5-4

Supports, Deck (Component Pictures).....6-2

System, Sprinkler.....3-8

**T**

Top Deck Proximity Sensor.....5-4

Trailer, Modification of.....1-1

Trailer, Operating the.....3-2

Transport of Livestock, Loading and.....1-1

Trolley Wheels/Guides.....5-3

Troubleshooting Guide.....9-1

**U**

Unloading 2 Layers of Sows/1 Layer of Cattle.....3-7

Unloading 3 Layers of Hogs.....3-4

**V**

**W**

Warranty, Certificate of Limited.....10-1

Warranty Schedule, Extended.....10-3

Warranty, New Trailer Certificate of.....10-2

Wheels/Guides, Trolley.....5-3

**XYZ**

# **Livestock Lifting Deck Operator's Manual**



## **WILSON TRAILER COMPANY**

4400 So. Lewis Boulevard • Sioux City, Iowa 51106  
Telephone • 712-252-6500

[www.wilsontrailer.com](http://www.wilsontrailer.com)  
E-Mail: [sales@wilsontrailer.com](mailto:sales@wilsontrailer.com)

6-14