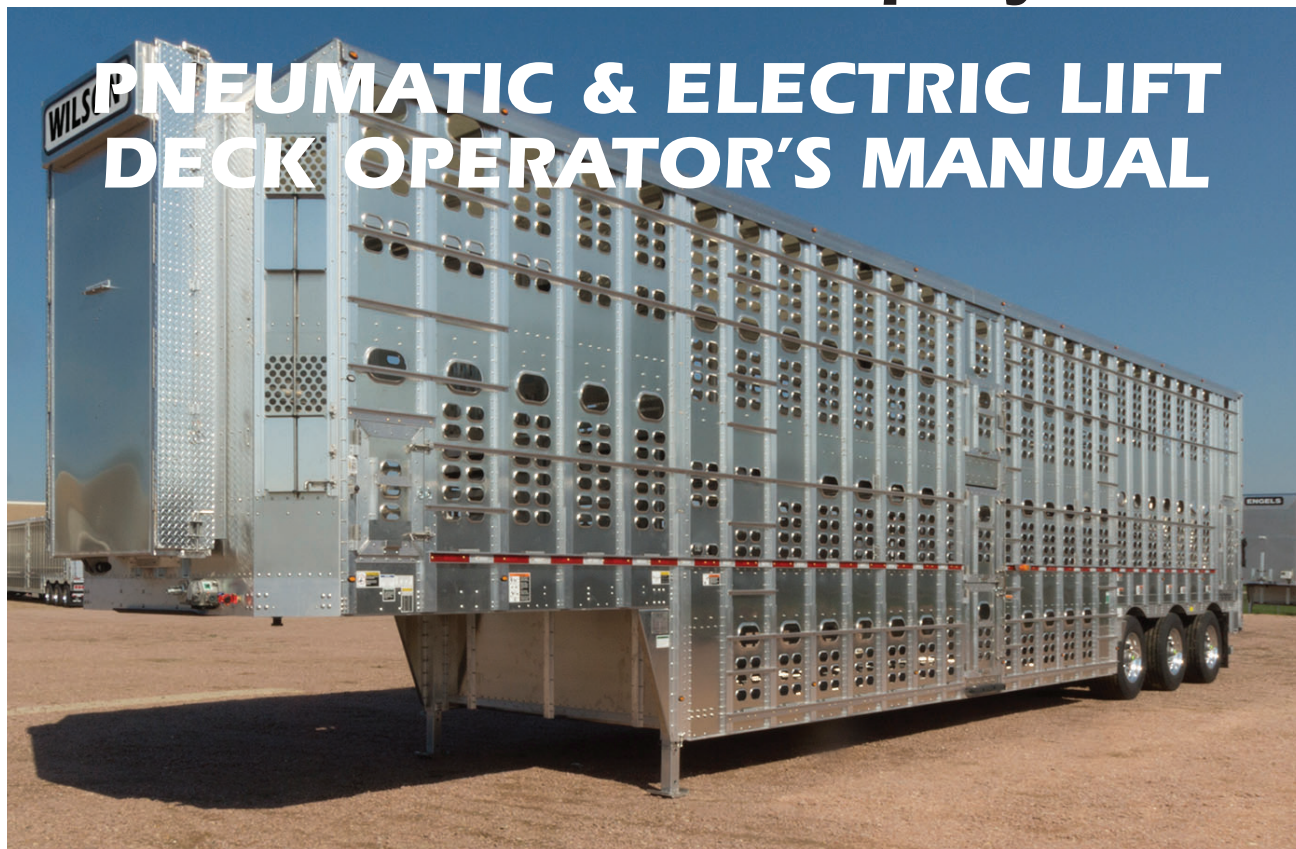


Wilson Trailer Company



This manual has been prepared to help you operate your Wilson Trailer Lift Deck successfully, economically, and safely. Should you have any questions, we ask that you contact a Wilson Trailer Company factory representative immediately for a clear explanation.

We thank you for expressing your confidence in us through the purchase of your new Wilson Livestock trailer.

We want you to know that it was designed to meet your specific needs for a livestock trailer and was built for long life and low cost operation. With regular, proper maintenance and your common sense use, we are confident that it will do so.



Additional manuals and decal kits for this trailer are available without charge.

MODEL NO.

SERIAL NO.



This safety alert symbol is to raise your awareness to important messages in this manual. When you see this symbol, be alert to the possibility of personal injury and carefully read the message that follows.

TABLE OF CONTENTS by SECTION

GENERAL INFORMATION

Normal Trailer Operation.....	1-1
Loading and Unloading of Livestock.....	1-1
Modification of Trailer.....	1-1

SAFETY

Decals and Emblems.....	2-1
-------------------------	-----

OPERATION

Pneumatic Control Valve Station.....	3-1
Alternate Pneumatic Control Valve Station.....	3-1
Electric Hoist Control Station.....	3-2
Air Control Schematic.....	3-3
Alternate Air Control Schematic (w/Deck Lock Down).....	3-3
Alternate Air Control Schematic (for trailers equipped w/Air Hoist).....	3-4
Control Schematic for Electric Hoist.....	3-5
Rope Routing.....	3-6
Lift Cables (wire rope).....	3-7
Pulleys.....	3-7
FRL (Filter, Regulator, & Lubricator).....	3-7
Lift Cables.....	3-8
Rope End Fittings.....	3-8
Pulleys.....	3-8
Air Tubing.....	3-8
Deck Lift Points/Deck Guides.....	3-8
Air Cylinder Deck Supports.....	3-9
Manual Flip Out Supports.....	3-9
Air / Electric Hoists.....	3-9

COMPONENT PICTURES

Lift Deck and Wire Ropes.....	4-1
Pulleys & Grease Fittings.....	4-1
"Trolley" Connection.....	4-1
Rope and Fitting Turnbuckles.....	4-1
Air Lift Cylinder.....	4-1
Pilot Operated Check Valve.....	4-1
Pilot Operated Check Valve, Cover in place.....	4-2
Control Valve Lift/Lower.....	4-2
Control Valve for Air Cylinder.....	4-2
Lockable Block & Bleed Valve.....	4-2
Air Cylinder Support.....	4-2
Manual Flip Out Supports.....	4-2
Manual Flip Out Supports Deployed.....	4-3
Air Hoist, FRL and Valve.....	4-3
Double Sheave Assembly.....	4-3
Single Sheave Assembly.....	4-3
Air / Electric Hoist Strap.....	4-3
Electric Hoist, Controller and Battery.....	4-4
Hoist Strap.....	4-4
Electric Hoist Controller.....	4-4

TROUBLESHOOTING

Troubleshooting.....	5-1
----------------------	-----

CONSUMER INFORMATION

Certificate of Limited Warranty.....	6-1
New Trailer Certificate of Limited Warranty.....	6-2
Extended Warranty Schedule.....	6-3
INDEX.....	6-5

General Information & Operation

The "Lift Deck" in the center or belly of the trailer is moved up and down by a combination of cables, pulleys, and a single pneumatic (air operated) "Lifting Cylinder". It is not for lifting animals or cargo. It is to be lifted and lowered using the air lift cylinder only when the deck is empty (except for any residual bedding or manure). It is dependent on gravity for lowering and requires a near level condition for proper operation.

The 4 "air cylinder supports" located just under the stationary deck are to be deployed under the lift deck and the weight of the lift deck applied to them before entering under the lift deck for loading animals or trailer cleaning. When loading animals into the belly or cleaning out the trailer, put the deck on the "air cylinder supports" before going under the lift deck. Make sure the "air cylinder supports" are in position before going under the lift deck. Do not go under the lift deck when it is suspended on wire ropes alone.

The "manual flip out supports" are for carrying the lift deck and animals while transporting. They should be deployed or retracted only when the lift deck is sitting on the "air cylinder supports".

Loading and Transport of Livestock

The loading of the trailer is important! Keep the center of gravity as low as possible. Proper placement of the larger animals should be considered.

Because load types vary, the driver needs to drive with appropriate care and within the limits of the load.

The well being of the livestock is dependent on the stock density, ventilation, the standard of driving, and quality of roads. Frequent inspection and careful driving cannot be over-emphasized!

Modification of Trailer


Any modification made to the trailer must comply with DOT and NHTSA regulations and must not compromise the gross vehicle weight rating (GVWR) of the trailer.
(Rev. 12-98)



WARNING

Any operation of the trailer outside the limitations stated in this manual will void any responsibility of Wilson Trailer Company for any of its results.

SAFETY

 <h2 style="margin: 0;">WARNING</h2>	<p>Personal Injury, death, and property damage may result from improper operation or unsafe practices. Be sure to read and follow all decals and emblems carefully.</p>
---	--




Decals and Emblems

AAA-06891-OO

<h2 style="margin: 0;">NOTICE</h2>
<p>Operation of lift deck requires the operation of two valves in conjunction with one another. First valve must be held in the open position in order to supply air to the second valve. Once second valve has air supply you can use the valve to operate deck up and down. If first valve is released at anytime during operation of deck, the deck will stop.</p> <p style="text-align: right; font-size: small;">WTC 05-19 AAA06891OO</p>

The following section contains some of the decals and emblems used on Wilson Livestock Center Lift Deck option trailers. Due to differences in configurations and equipment, your trailer may or may not use all the decals and emblems listed. Newer trailers may also have decals and emblems that differ from older trailers. Replace damaged or missing decals promptly.


AAA-06891-QA

<h2 style="margin: 0;">NOTICE</h2>
<div style="display: flex; justify-content: space-around; align-items: flex-start;"> <div style="text-align: center;"> <p style="font-size: x-small;">DOWN LOCK/ LOCK UP PINS</p>  <p>1</p> <p style="font-size: x-small;">PUSH</p> </div> <div style="text-align: center;"> <p style="font-size: x-small;">FLOW CONTROL</p>  <p>2</p> </div> <div style="text-align: center;"> <p style="font-size: x-small;">RAISE/LOWER</p>  <p>3</p> <p style="font-size: x-small;">UP/DOWN</p> </div> </div> <div style="margin-top: 10px;"> <p>A. Push levers 1 and 2 simultaneously and hold.</p> <p>B. Lever 3 raises or lowers deck.</p> <p>C. Lever 2 is shut off valve for air flow. Release this lever and deck will stop.</p> </div> <p style="text-align: center; font-size: x-small;">2 HANDS REQUIRED!</p> <p style="text-align: right; font-size: x-small;">WTC 05-19 AAA06891QA</p>

AAA-06462-DM

	<h2 style="margin: 0;">WARNING</h2>
<p>Keep foot clear of moving decks.</p> <p style="text-align: right; font-size: x-small;">WTC 10-18 AAA06462DM</p>	


AAA-06891-OP

	<h2 style="margin: 0;">WARNING</h2>
<p>STAND CLEAR of SUSPENDED DECK!</p> <p>Lift deck must be properly supported before entering space on or under the lift deck. The lift deck is NOT for lifting animals.</p> <p style="text-align: right; font-size: x-small;">WTC 05-19 AAA06891OP</p>	

AAA-06462-DL

	<h2 style="margin: 0;">WARNING</h2>
<p>Keep body clear of moving deck.</p> <p style="text-align: right; font-size: x-small;">WTC 10-18 AAA06462DL</p>	

AAA-06462-BM

	<h2 style="margin: 0;">WARNING</h2>
<p>Do not stand under lift deck when it is being raised or lowered, or personal injury may result.</p> <p>Replace all frayed cables immediately.</p> <p style="text-align: right; font-size: x-small;">WTC 9-18 AAA06462BM</p>	

AAA-06462-DK

	<h2 style="margin: 0;">WARNING</h2>
<p>DO NOT stick hands or fingers through side openings while movable decks are being operated.</p> <p style="text-align: right; font-size: x-small;">WTC 9-18 AAA06462DK</p>	

(Rev. 11-21)

SAFETY



WARNING

Avoid standing under lift deck when solely suspended by steel cables. During normal livestock transport, the deck should be supported by the floor, or by the intended deck supports, not by cables. Never be on or under the deck when it is moving. Before loading or unloading operation, ensure all danger areas are clear inside and outside the trailer.



WARNING

When operating the lift deck and supports, be aware of any unusual component motion, sounds, sticking, binding, or malfunction that may indicate immediate required maintenance.



WARNING

Make sure the deck is firmly on supports by connecting to a supply of air pressure of 100 - 120 psi and holding the lowering valves for several seconds to exhaust any trapped air pressure in the lift cylinder before going under or on the deck. Supply pressure is required for deck raising or lowering.

This is especially important when going on top of the deck. If the deck is loaded with animals and the lift cylinder has un-exhausted pressure left in it, a hazardous condition may result when unloading. When the animals unload, the weight on the deck becomes lighter and the un-exhausted air pressure in the lift cylinder may cause upward motion of the deck, resulting in injury or death.



WARNING

The lifting system is intended to lift the deck alone. Do not operate lift deck under load.

SAFETY



WARNING

Mechanical binding can cause air pressure to unexpectedly build up in the air lift cylinder or air support cylinders. If binding releases, unexpected sudden motion can result causing injury or death. This trailer must have regular inspections and maintenance to avoid mechanical problems such as binding. If the deck appears mechanically bound and will not move normally, do not go under or above the deck. Get immediate maintenance.



WARNING

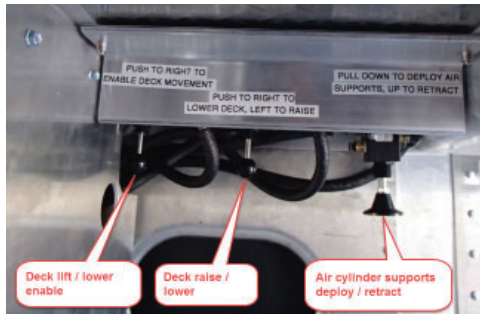
Before performing maintenance requiring air pressure removal from the deck lift system:

- 1. Lower the lift deck to a supported position.**
- 2. Disconnect the air supply to the trailer.**
- 3. Dump air from the trailer air tanks using the petcock on each tank.**
- 4. Remove the cover and close the block & bleed valve. Lock it out.**
- 5. Dump any residual pressure in the lift cylinder by operating the manual over ride button on the pilot check valve.**

(Rev. 11-21)

OPERATION

Pneumatic Control Valve Station



The lifting and lowering of the deck is done by operating two valve levers at the same time. One lever enables the operation, the other controls direction up or down. Push the lever on the left valve to enable operation. Push the lever on the right valve to the right to lower the deck, to the left to raise the deck. It may take 20 seconds for the deck to react and move due to the volume of air that needs to flow. When putting the deck onto either the manual flip out supports or the air cylinder supports hold the lowering lever for several seconds after the deck makes contact with the support to make sure the air is exhausted and the deck is resting on the supports.

The air cylinder supports are controlled by a push pull valve that is operated up and down. Pull down to deploy the air supports, up to retract.

Alternate Pneumatic Control Valve Station

Your trailer may have a control valve station as shown.

In order to raise the deck from hog position, the "Flow Control" and "Deck Pins/ Deck Stop" levers must be actuated at the same time and held before operating the "Deck Up" lever. If the decks does not raise, it may be that the "deck down lock" mechanism is preventing deck upward movement. In that case, lower the deck back down onto supports and try again.

(Rev. 09-17)



NOTICE

<p>DOWN LOCK / LOCK UP PINS</p> <p>1</p>	<p>FLOW CONTROL</p> <p>2</p>	<p>RAISE/LOWER</p> <p>3</p>	<p>A. Push levers 1 and 2 simultaneously and hold.</p> <p>B. Lever 3 raises or lowers deck.</p> <p>C. Lever 2 is shut off valve for air flow. Release this lever and deck will stop.</p>
<p>← PUSH UP/DOWN</p>			
<p>2 HANDS REQUIRED!</p>			<p>WTC 05-19 AAA06891QA</p>

(Rev. 05-19)

OPERATION

Alternate Pneumatic Control Valve Station



Alternate Control Valve Station after 2/8/2018.

(Rev. 03-18)



Your trailer may be equipped with a “deck down lock” that is intended to prevent raising the deck above hog position setting without retracting this device. It will not interfere with lowering the deck.

(Rev. 09-17)

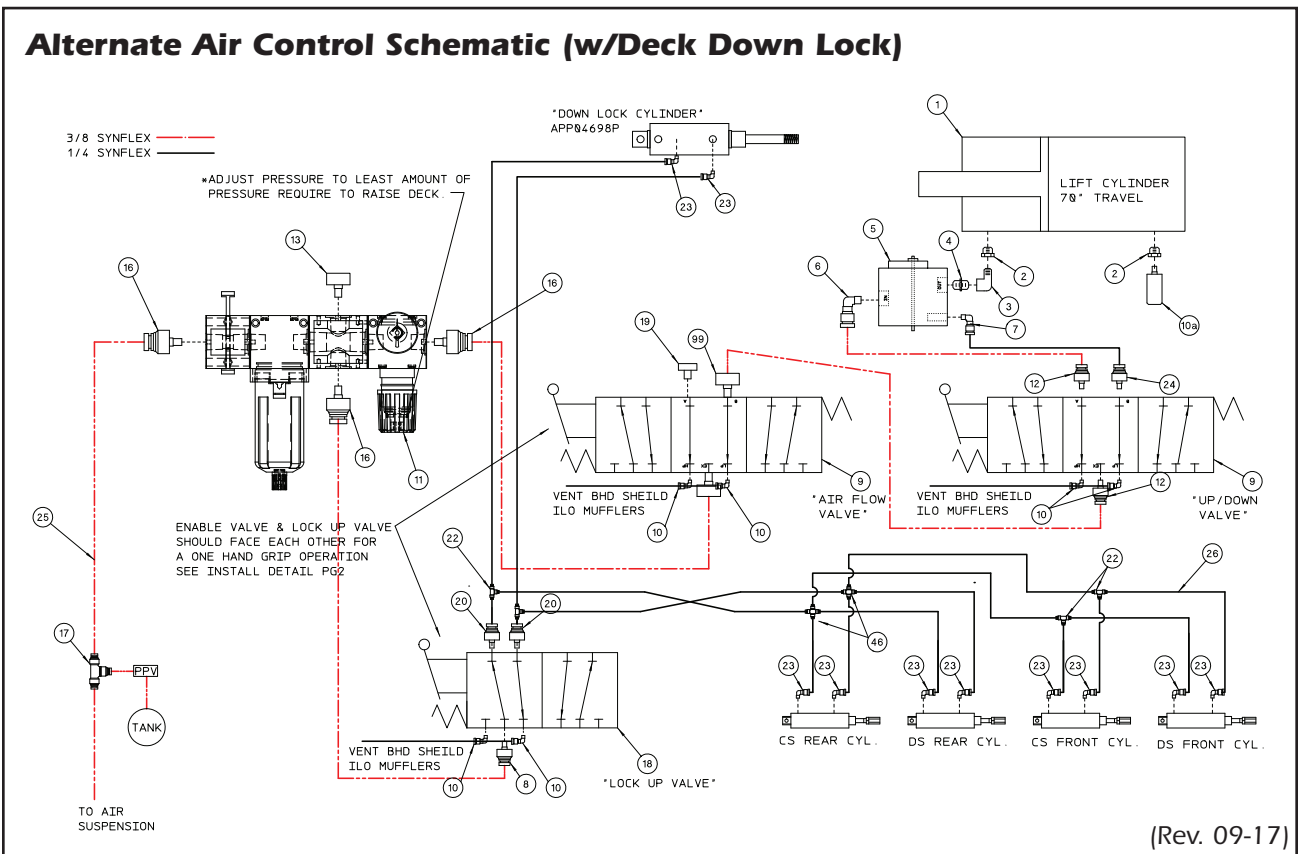
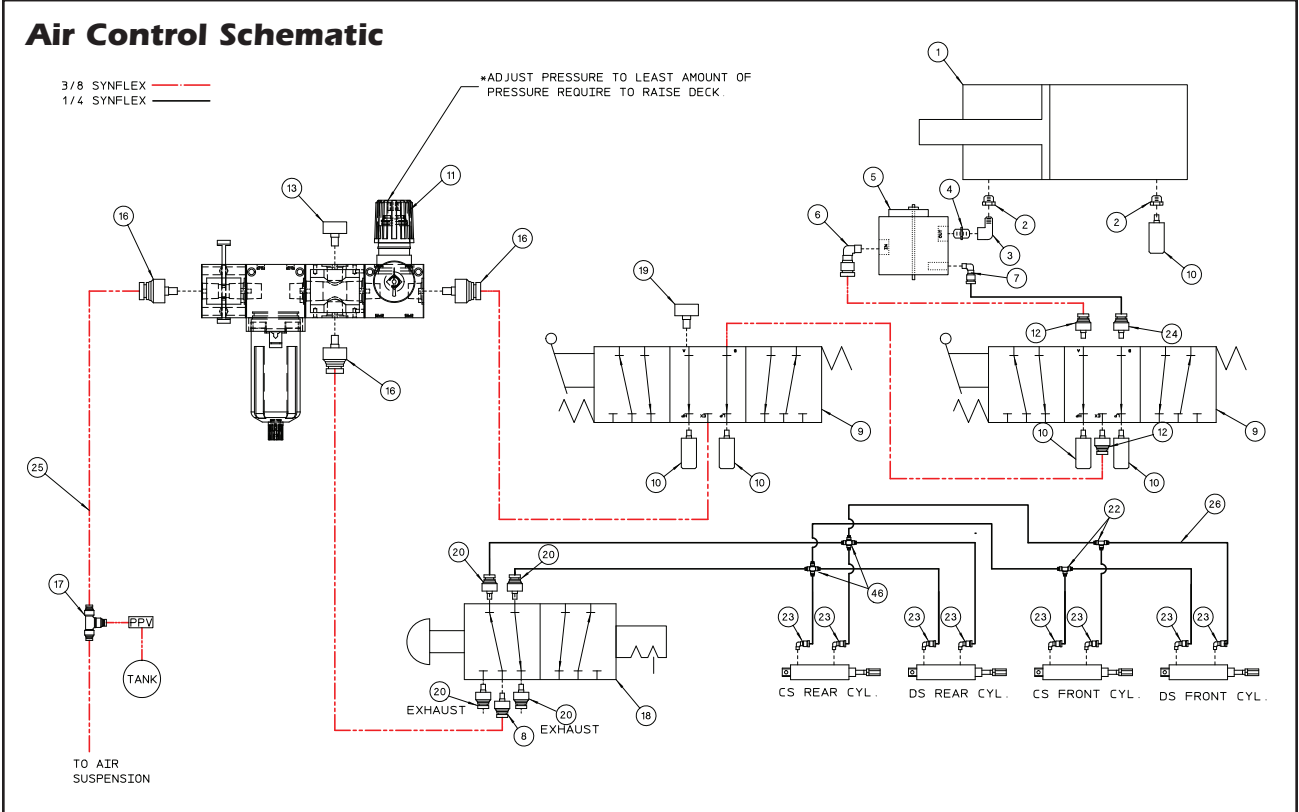
Electric Hoist Control Station



If deck is raised in the locked position, the operator must press and hold the “ALLOW” button while pressing “UNLOCK” to release the air cylinder supports. While holding “ALLOW” and “UNLOCK”, the operator can then press “DOWN” to lower the deck. Once past the cylinder supports, “UNLOCK” can be released. To raise the deck, “ALLOW” and “UP” must be held. If raising to the locked position, press “UNLOCK” in conjunction with “ALLOW” and “UP”. Once past the cylinder supports, the “UNLOCK” button can be released and the deck lowered onto the supports.

(Rev. 11-21)

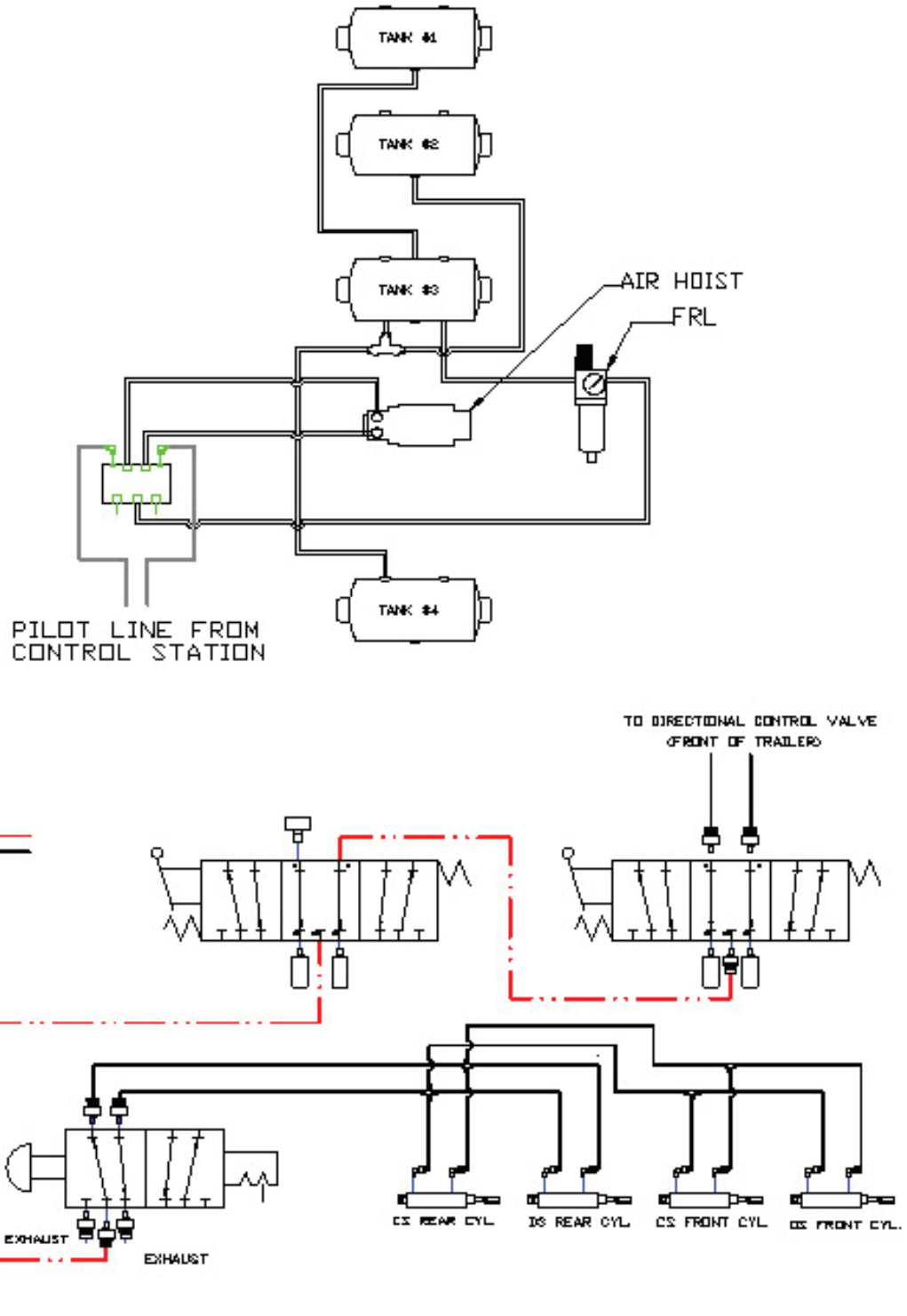
OPERATION



(Rev. 09-17)

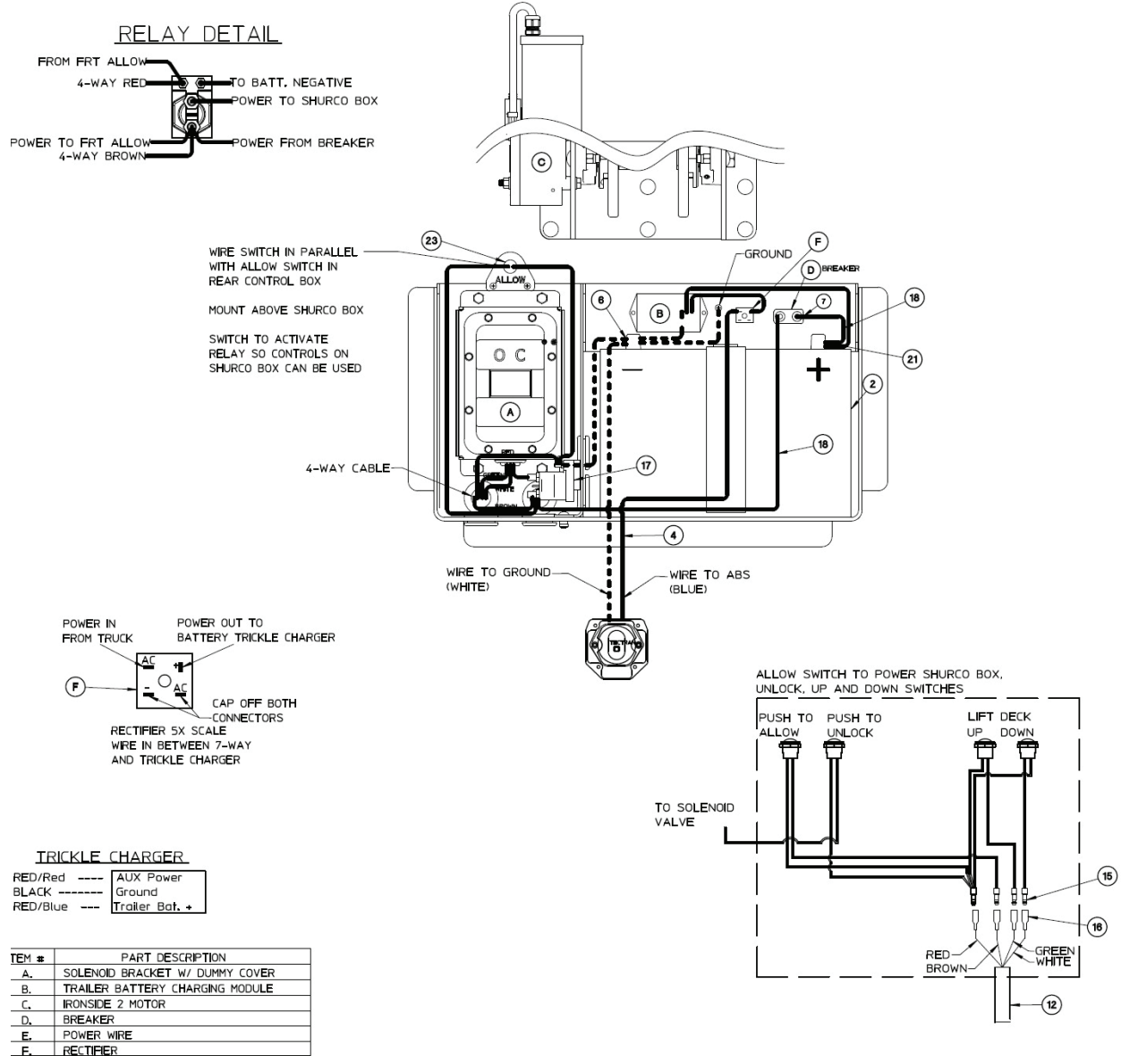
OPERATION

Alternate Air Control Schematic (for trailers equipped w/Air Hoist)



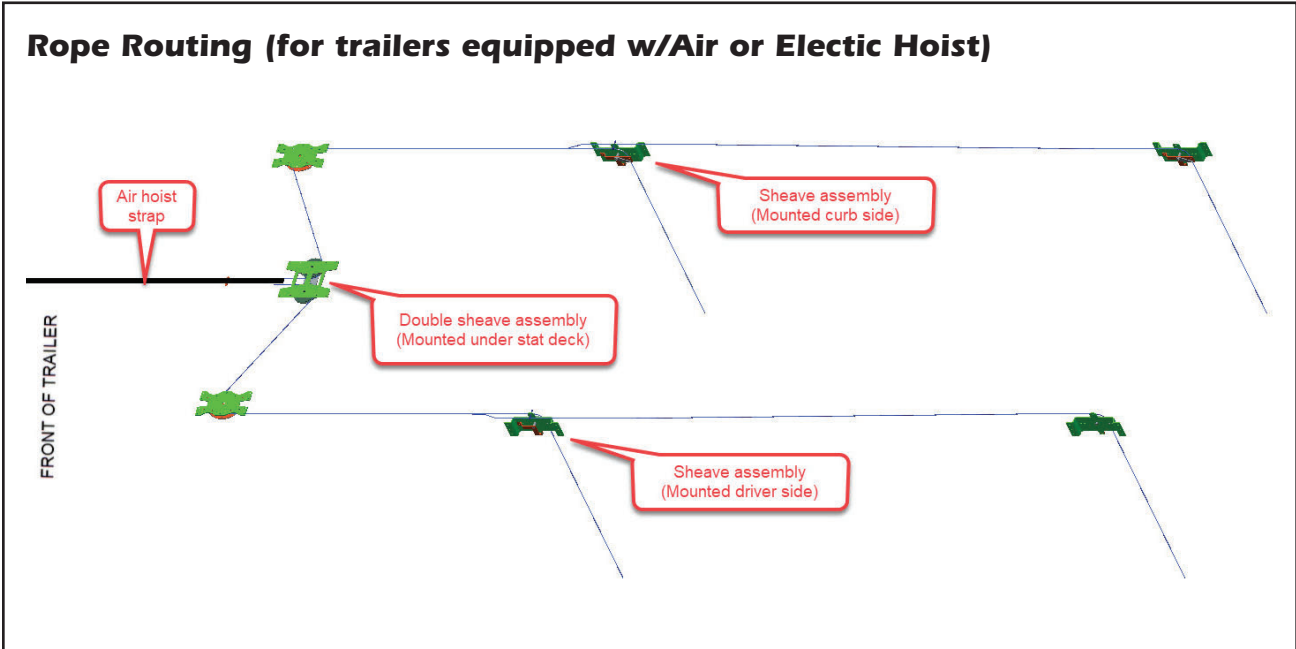
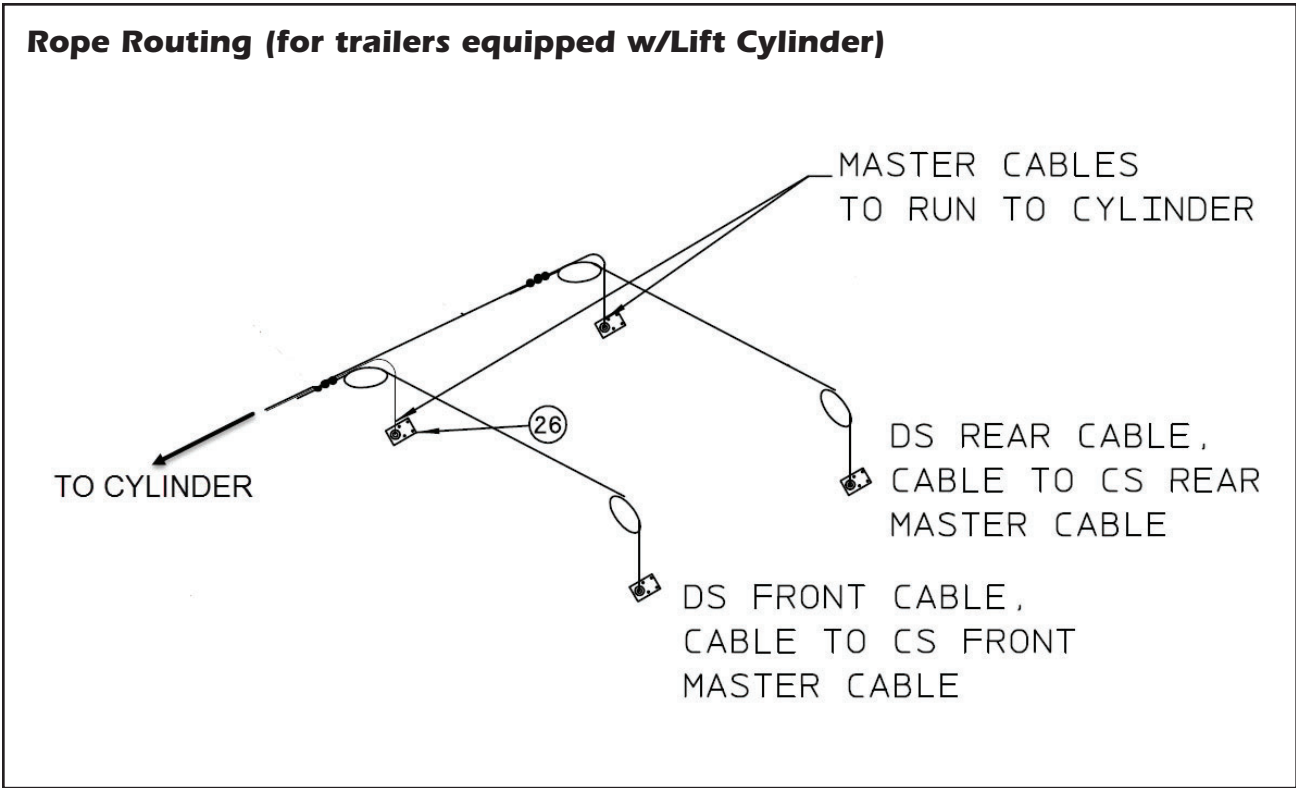
OPERATION

Control Schematic for Electric Hoist



(Rev. 11-21)

OPERATION



LUBRICATION

Lift Cables (wire rope)

Lubricate the wire rope with spray lube or drip oil. Apply the lube for the length of the rope for best corrosion and wear resistance. Or for minimal protection against wear, apply lubricant for the lengths of rope that bend as it travels over pulleys. Bending causes most rope to wear as the small wires move with respect to each other and rub as the rope bends over a pulley.

Use a lubricant that penetrates and leaves behind a component such as lithium, graphite, or molybdenum disulfide. Lubricate the ropes at least monthly. Trailer washing may require lubricating more often. Lubricate with ropes unloaded and slightly slack. (White lithium aerosol CRC brand, Wilson Trailer part APP-03640-A, 16 oz can.)

Pulleys

The lift system may consist of multiple pulleys both on the inside and the outside of the trailer.

If the cable pulleys are equipped with grease fittings, they should be greased monthly. Trailer washing may require greasing more often. Remove dirt from pulleys. Lubricate the pulleys with ropes unloaded and slack. Rotate pulleys while greasing. Use a good quality with an EP additive (such as Pennzoil 705 white grease, Wilson Trailer part APN-03050, tube).

FRL (Filter, Regulator & Lubricator)

The FRL is located inside the front box next to the air hoist. Check and top off reservoir with 150 VG 32 or DIN 51524 oil.

Reservoir capacity is around 5 oz.

ROUTINE INSPECTION

Lift Cables

Inspect the wire rope lifting cables for their full length at least once a week. Look for kinks, wear, corrosion, fraying, or broken wires and unusual wear. Replace compromised cables.

Your trailer may have certain rope end fittings that require special assembly instructions. Refer to the link below.

<http://www.esmet.cm/pdf/Electroline%20Assembly%20instructions.pdf>

Rope End Fittings

Inspect the fittings that secure the rope to the deck or trolley for looseness, corrosion, or unusual wear each week.

Pulleys

Inspect all pulleys each week. With the pulley unloaded and the rope slack, rotate the pulley by hand. Feel or listen for unusual friction, noise, vibration, or increased wobble, etc. Inspect for unusual wear caused by the contact of the rope. Clean debris that can wedge between pulleys and their structural brackets.

Air Tubing

Inspect air line tubing for kinks, cracks, cuts, or any visible defects. Inspect for leaks.

Deck Lift Points/Deck Guides

The decks are equipped with lift rope attachment points combined with fore and aft / side to side guides. Inspect the plastic deck guides once a week for unusual wear or damage. Check the fasteners that hold the lift points to the deck.

ROUTINE INSPECTION

Air Cylinder Deck Supports

Inspect that the air cylinder deck support pins are securely threaded onto the air cylinders. If they are loose, remove and reinstall with red Loctite thread locker.

Manual Flip Out Supports

Inspect that these supports are properly secured to the trailer sides, that fasteners are not compromised.

Air/Electric Hoists

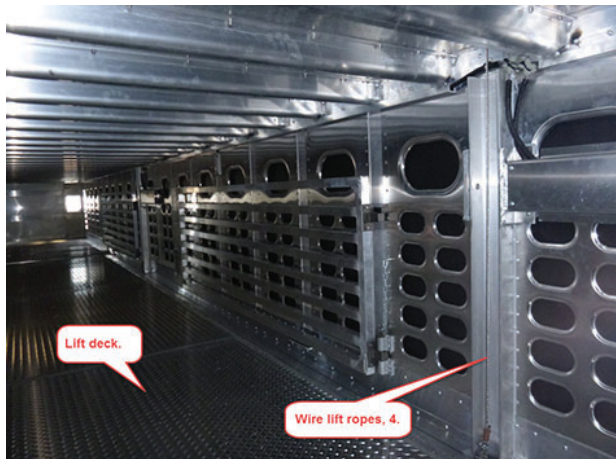
Check hoist mounting fasteners frequently for loose fasteners. Replace fastener if needed.

Check strap on hoist frequently for wear. Replace if needed.

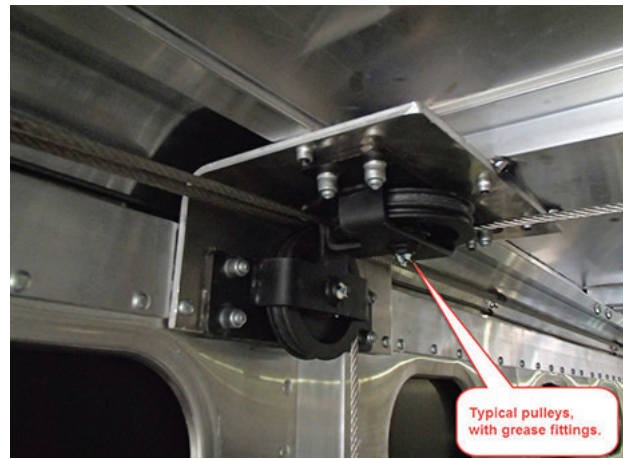
Check electrical components for corrosion and proper fit.

(Rev. 11-21)

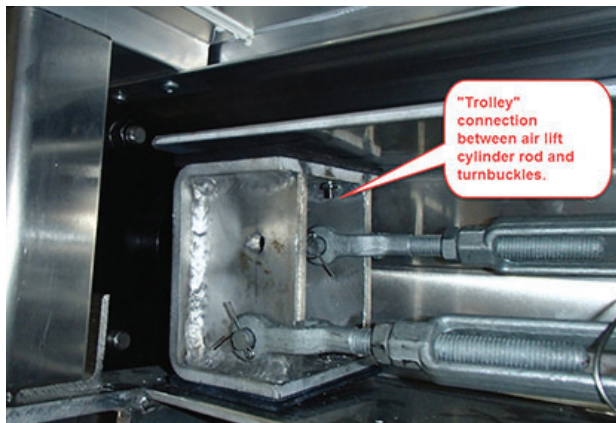
COMPONENT PICTURES



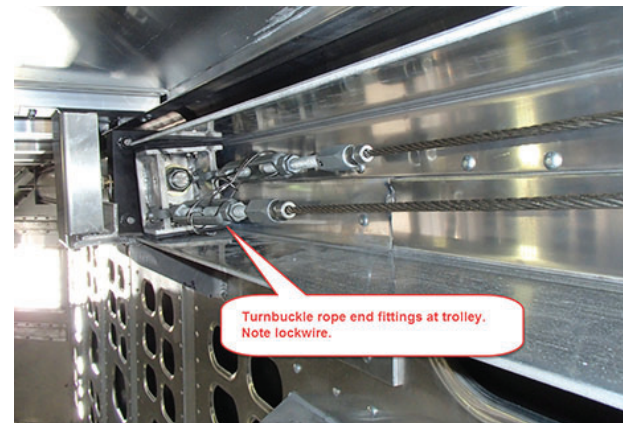
Lift Deck and Wire Ropes



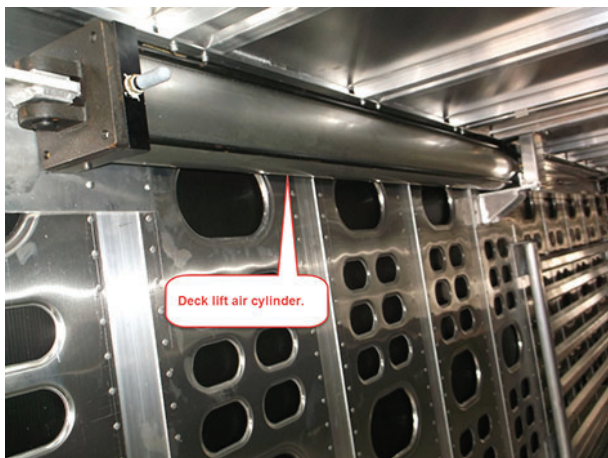
Pulleys & Grease Fittings



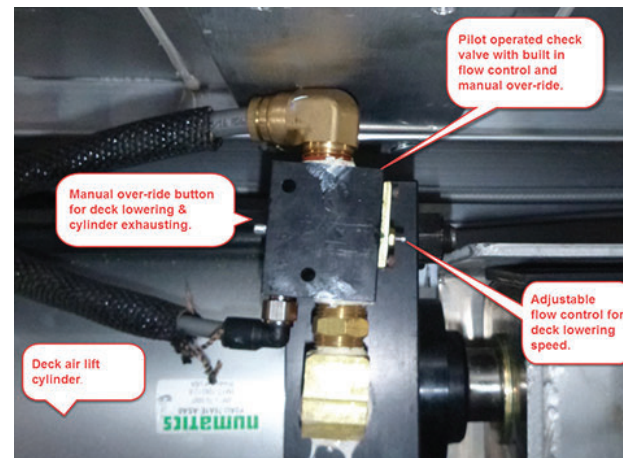
"Trolley" connection between lift air cylinder rod and lift rope turnbuckles



Rope and fitting turnbuckles at trolley

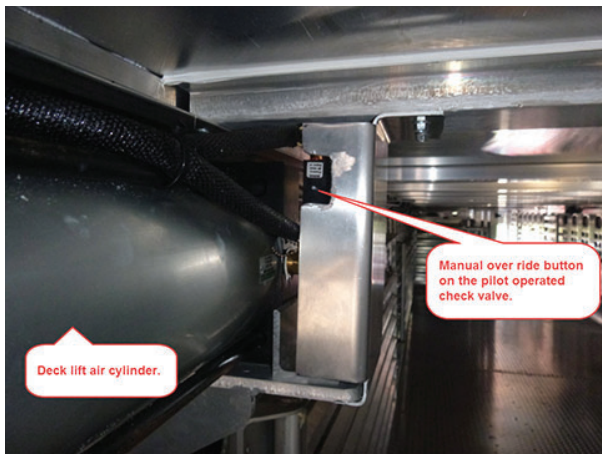


Air lift cylinder (#1 on schematic)



Pilot operated check valve, cover removed (#5 on schematic)

COMPONENT PICTURES



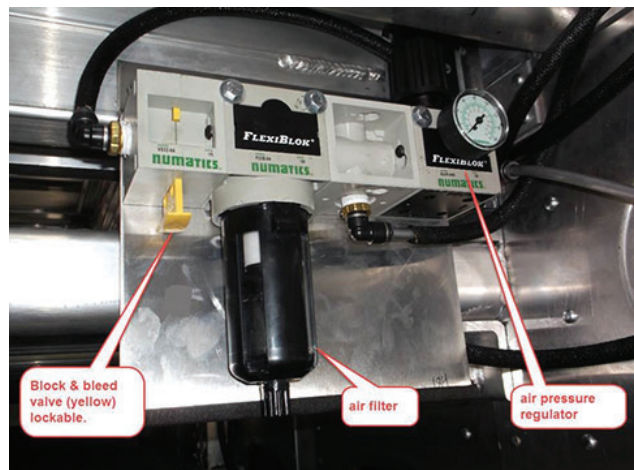
Pilot operated check valve, cover in place, showing manual override button (#5 on schematic)



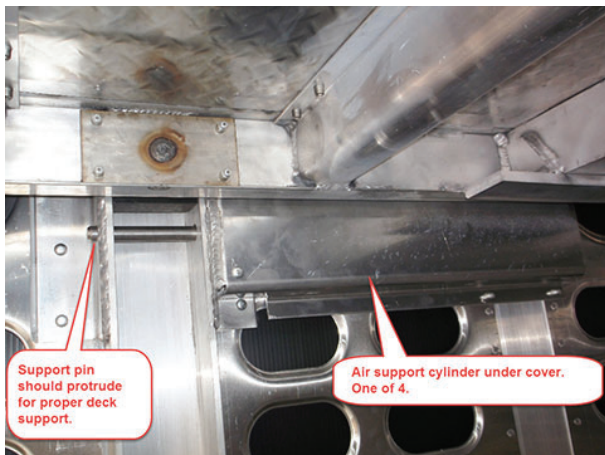
Control valve lift/lower (#9 on schematic)



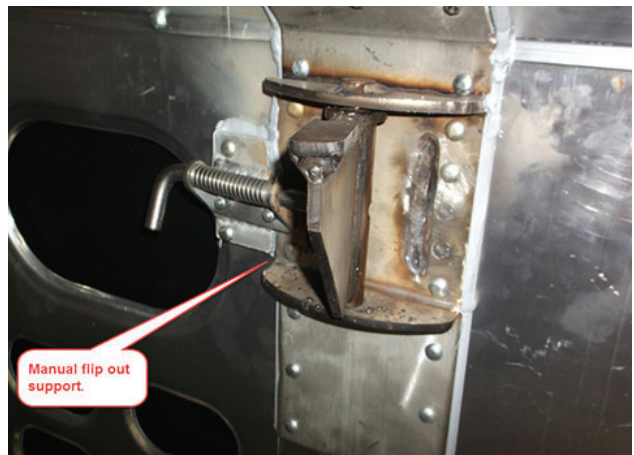
Control valve for air cylinder supports (#18 on schematic)



Lockable block & bleed valve at left, filter, adjustable air pressure regulator cover removed (#11 on schematic)

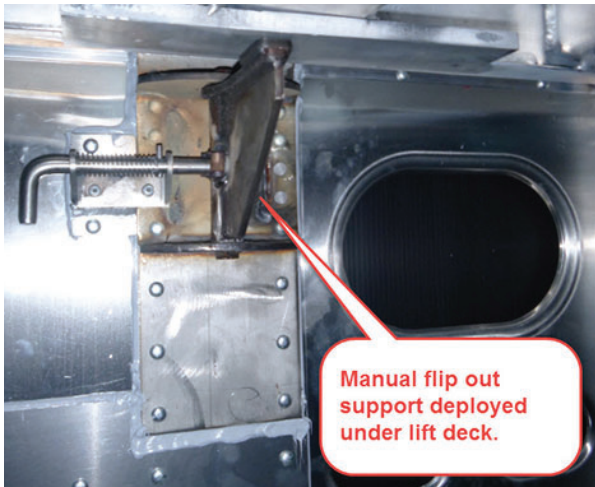


Air cylinder support shown here deployed, 4 places on trailer, cover in place.

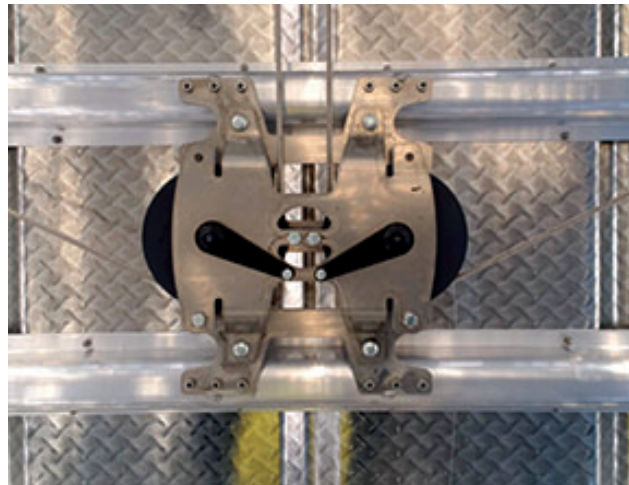


Manual flip out supports, 13 places on trailer.

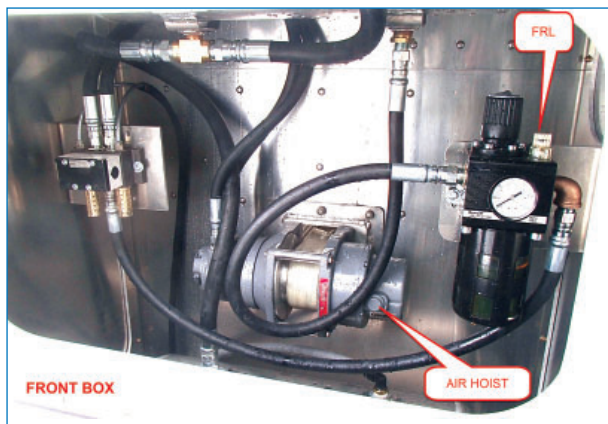
COMPONENT PICTURES



Manual flip out support deployed under lift deck



Double sheave assembly
(mounted under stationary deck).



Air Hoist, FRL & Valve on front of trailer.



Single sheave assembly
(mounted under stationary deck).



Air/Electric hoist strap (front of trailer).

COMPONENT PICTURES

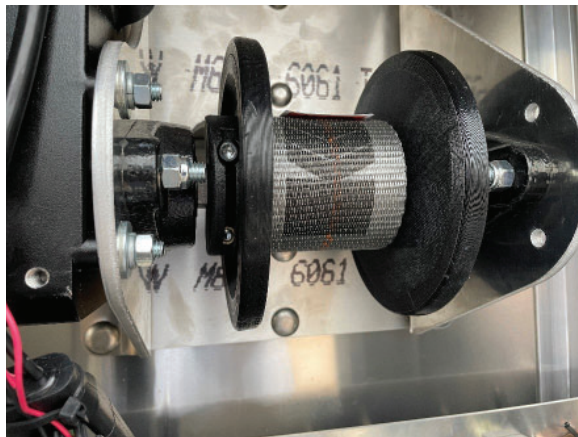


Electric hoist, controller, and battery
(located on the front of trailer)



Electric hoist controller

The deck can be raised or lowered slightly when performing maintenance. ALLOW+O will raise, while ALLOW+C will lower.



Hoist Strap

If maintenance is required, the hoist strap can be removed via the two bolts located on each side of the strap. This will release the clevis and allow direct removal of the strap reel. **DO NOT ATTEMPT TO REMOVE STRAP WHEN UNDER TENSION FROM DECK.**

(Rev. 11-21)

TROUBLESHOOTING

Notes on air pressure:

- The lift deck may be operated with a typical tractor or shop air pressure supply. Typical raising required pressure for a deck approx. 24 feet long is about 60 psi. If the required pressure is much higher than that it may mean that there is excess friction and maintenance may be required at deck guides, the rope trolley, or pulleys. Factory regulator setting = 65 psi. Do not set the regulator higher than required for proper operation as equipment damage may result if the deck lifting system mechanically binds for any reason.

Notes on air pressure: (for trailers equipped with pneumatic hoist)

- The pneumatic hoist requires large volume of air under pressure to operate the decks. Make sure the air tanks on the front of the trailer are full before operating the decks.
- **DO NOT** continuously operate the hoist. Allow time for the tanks to build pressure between deck movements.
- Deck will not lower if inadequate air pressure to unlock deck.

Deck will not raise:

- Inadequate air supply pressure. Check source pressure. Plugged air filter.
- Dirt in the check valve portion of the pilot operated check valve.
- Mechanical binding.
- Air line leak. Also check for air coming out of the lift cylinder vent indicating an internal leak.
- The "Deck Down Stop" may not be retracted.
- Dead battery if equipped with electric hoist.
- Damage to electrical circuit.

Deck will raise but not lower:

- Inadequate air supply pressure. The pilot operated check valve requires air supply pressure to initiate lowering of the deck.
- Is the trailer near level? If not level, there is extra friction at the guides that may inhibit motion.
- Pulleys sticking?
- Has the rope trolley stuck?
- There could be dirt in the pilot operated check valve or the flow control portion of the same valve.
- Dead battery if equipped with electric hoist
- Damage to electrical circuit.

Deck jumps up or drops suddenly during lifting and lowering:

- Since air is compressible and all components have friction, there will be normal "not smooth" followed by variation in raising or lowering speed. If these variations are abnormally excessive, inspect the trailer for interferences, binding, or excess friction. Binding can be hazardous if air pressure builds up and then the binding releases, causing sudden unexpected motion.operation. This occurs when air pressure builds up to initiate motion then overcomes static friction

Excessive or reduced average speed:

- Try resetting the flow control. Flow control factory setting is 1-1/4 turns out.
- Excessive or reduced pressure setting at air pressure regulator.
- Inspect for air leaks.

(Rev. 11-21)

CONSUMER INFORMATION

Certificate of Limited Warranty



The following warranty is given to the owner of each new Wilson trailer sold by Wilson Trailer or its authorized dealers in the United States and Canada during the period of time and upon the conditions set out in the Extended Warranty Schedule.

Warranty Coverage

Wilson Trailer will repair or replace, at its option, any factory-installed part that is defective in material or factory workmanship under normal use, maintenance and service. Normal use excludes any operation in excess of GVWR (gross vehicle weight rating) and any use the Owner's Manual states is not recommended. Warranty repairs will be made and adjusted in accordance with the Extended Warranty Schedule as it appears on the following page. Any repaired or replaced parts are covered only for the remainder of this warranty. All parts replaced under this warranty become the property of Wilson Trailer.

This warranty begins on the date the trailer is delivered to the first retail purchaser or the date it is first placed into service as a demonstrator or leased trailer, whichever comes first.

Non-coverage Items

This warranty does not cover the following items:

- Tires.
- Axles, wheels, tires, suspension, trailer frame and other components and structure damaged through the use of single axle dump valves.
- Non-standard features or items specified by the purchaser.
- Parts that fail due to lack of required maintenance or use of non-equivalent parts.
- Normal wear or deterioration on any part.
- Any trailer normally driven outside the United States or Canada.
- The replacement of expendable maintenance items when the replacement is not due to a defect in material or factory workmanship.
- Any preowned trailer

(Rev. 07-16)

CONSUMER INFORMATION

New Trailer Certificate of Limited Warranty

To Get Warranty Service

Parts claimed to be defective in material or workmanship must be brought to the attention of Wilson Trailer or the selling dealer by taking the trailer to the dealer or by written notification within ten (10) days of discovery, and any repairs or replacement must be commenced within forty-five (45) days thereafter. Wilson Trailer has the right to inspect the claimed defect and determine whether the part is covered by this warranty. If you cannot get warranty service, or you are dissatisfied with the service or with a warranty decision, contact Technical Service and Claims Manager, Wilson Trailer, P.O. Box 6300, Sioux City, IA 51106.

Owner's Responsibility

As the owner of this trailer, you have the responsibility to perform the required maintenance at the proper intervals and make reasonable and normal use of the trailer.

Limitations and Disclaimers

Wilson Trailer disclaims any responsibility for any loss of time or use of the parts or trailers in which the parts are installed, transportation, cargo loss, or other incidental or consequential damage. Any implied warranties, including the implied warranty of merchantability and fitness for a particular purpose, are limited to the duration of this written warranty. Wilson Trailer makes no warranty as to quality or performance of its trailer other than set forth above.

Some states do not allow limitations on how long an implied warranty lasts, or the exclusion or limitation of incidental or consequential damages, so the above limitations or exclusions may not apply to you. This warranty gives you special legal rights, and you may also have other rights which vary from state to state.

Wilson Trailer

Serial Number _____
G.V.W. Rating _____
Purchased By _____
Date In Service _____
Selling Dealer _____

By  _____
(Authorized Signature)

CONSUMER INFORMATION

Extended Warranty Schedule

Per Written Warranty Conditions Covering Defect in Material and Workmanship as to Construction and Assembly and Installation Only.

% Allowable to owner (from date in service to original purchaser) for Material and Labor excluding component parts and accessories.	<u>Vendor Items</u>		
	Axles	Side Structures	Dog House & Gate Latches
	Suspensions	Front Assemblies	Door Hardware
	Wheels	Rear Assemblies	Gate, Ramp, & Dog House Hinges
	Hubs and Drums	Crossmembers	Drop Leg Landing Gears
	Air Brake Valves and ABS Components	Undercarriage	Tire Carriers
	Tires	Metal Gates	Aluminum Roll-up Gates
	2 Speed Landing Gears	Dog House	Roll-up Tracks
	Axle Bearings	Metal Roof Skin	Painting (Outside Only)
	Axle Oil Seals	Roof Bows	Air Lines and Fittings
Lights and Wiring Harness	King Pin Assembly	Panel/Tool Boxes	
Axle Springs	Metal Roof Caps		
Translucent Roofs	Metal Flooring		
Lift Axle Controls	Ramps		
%	MONTHS	MONTHS	MONTHS
100	Use Vendor's	1 - 12	1 - 12
50	Warranty	13-24 Months	-
0	Schedule	Over 24	Over 12

This warranty shall not apply from owner operation exceeding the GVWR rating of the trailer.

WILSON TRAILER COMPANY

INDEX

A		H	
Air Control Schematic	3-3	Hoists, Air	3-8
Air Cylinder Deck Supports	3-9	Hoists, Air/Electric	3-9
Air/Electric Hoists	3-9	Hoist Control Station, Electric	3-2
Air Tubing	3-8		
Alternate Air Control Schematic	3-3	I	
Alternate Pneumatic Control Valve Station	3-1	INDEX	6-4
		INFORMATION, CONSUMER	6-1
B		INFORMATION, GENERAL	1-1
		Information & Operation, General	1-1
		INSPECTION, ROUTINE	3-8
C		J	
Cables (wire rope), Lift	3-6		
Cables, Lift	3-7	K	
Certificate of Limited Warranty	6-1		
Certificate of Limited Warranty, New Trailer	6-2	L	
COMPONENT PICTURES	4-1	Lift Cables	3-8
CONSUMER INFORMATIONS	6-1	Lift Cables (wire rope)	3-6
Control Station, Electric Hoist	3-2	Lift Points/Deck Guides, Deck	3-8
Control Schematic for Electric Hoist	3-5	Limited Warranty, Certificate of	6-1
Control Schematic, Air	3-3	Livestock, Loading and Transport	1-1
Control Schematic, Alternate Air	3-4	Loading and Transport of Livestock	1-1
Control Valve Station, Pneumatic	3-1	LUBRICATION	3-7
Control Valve Station, Alternate Pneumatic	3-1		
Cylinder Deck Supports, Air	3-9	M	
		Manual Flip Out Supports	3-9
		Modification of Trailer	1-1
D		N	
Decals and Emblems	2-1	New Trailer Certificate of Limited Warranty	6-2
Deck Guides, Deck Lift Points/	3-7		
Deck Lift Points/Deck Guides	3-8	O	
Deck Supports, Air Cylinder	3-9	OPERATION	3-1
		Operation, General Information	1-1
		Out Supports, Manual Flip	3-9
E		P	
Electric Hoist, Air	3-9	PICTURES, COMPONENT	4-1
Electric Hoist Control Station	3-2	Points/Deck Guides, Deck Lift	3-8
Electric Hoist, Control Schematic	3-5	Pneumatic Control Valve Station	3-1
Emblems, Decals and	2-1	Pulleys	3-6
End Fittings, Rope	3-7	Pulleys	3-8
Extended Warranty Schedule	6-3		
F			
Fittings, Rope End	3-8		
Flip Out Supports, Manual	3-9		
FRL (Filter, Regulator, & Lubricator)	3-6		
G			
GENERAL INFORMATION	1-1		
General Information & Operation	1-1		
Guides, Deck Lift Points/Deck	3-8		

INDEX

R

Rope End Fittings.....	3-8
Rope Routing.....	3-6
ROUTINE INSPECTION.....	3-8
Routing, Rope.....	3-6

S

SAFETY.....	2-1
Schedule, Extended Warranty	6-3
Schematic, Air Control	3-3
Schematic, Alternate Air Control	3-3
Schematic for Electric Hoist, Control	3-5
Station, Alternate Control Valve	3-1
Station, Electric Hoist Control	3-2
Station, Pneumatic Control Valve.....	3-1
Supports, Air Cylinder Deck	3-9
Supports, Manual Flip Out.....	3-9

T

Trailer, Modification of	1-1
Transport of Livestock, Loading and.....	1-1
Tubing, Air	3-8
TROUBLESHOOTING	5-1

U

V

Valve Station, Alternate Pneumatic Control	3-1
Valve Station, Pneumatic Control.....	3-1

W

Warranty, Certificate of Limited.....	6-1
Warranty Schedule, Extended	6-3

XYZ



WILSON TRAILER COMPANY

4400 So. Lewis Boulevard • Sioux City, Iowa 51106
Telephone • 712-252-6500

www.wilsontrailer.com
E-Mail: sales@wilsontrailer.com